

**4059 WEST 4715 SOUTH
KEARNS, UT 84118**

GENERAL NOTES	
1	THESE DRAWINGS HAVE BEEN PREPARED IN ACCORDANCE WITH THE SUPPLIED CONSTRUCTION DRAWINGS, SPECIFICATIONS GLAZING SYSTEMS' PROPOSAL.
2	REVISIONS, ADDITIONS, OR DEDUCTIONS REQUIRE WRITTEN AUTHORIZATION OR A REVISED PURCHASE ORDER ACCOMPANYING RETURNED PRINTS.
3	GLAZING CONTRACTOR WILL ASSUME NO RESPONSIBILITY BEYOND FABRICATION IN ACCORDANCE WITH THESE DRAWINGS OR FROM ERRORS RESULTING FROM THE USE OF THESE DRAWINGS BY OTHER TRADES.
4	THE PURPOSE OF THESE SHOP DRAWINGS IS TO CLARIFY AND DEFINE THE SCOPE OF WORK THAT THE ARCHITECT HAS INTENDED FOR THIS PARTICULAR PROJECT.
5	APPROVAL BY THE ARCHITECT AND CUSTOMER SHALL CONSTITUTE ACCEPTANCE OF THESE DRAWINGS AS THE BASIS OF WORK THAT WILL BE SUPPLIED BY GLAZING CONTRACTOR. THESE DRAWINGS REPRESENT OUR INTERPRETATION OF THE ARCHITECTS INTENT DELIVERED THROUGH CONSTRUCTION DRAWINGS AND SPECIFICATIONS.
6	IF THESE SHOP DRAWINGS DO NOT REPRESENT THE ARCHITECTS SPECIFIC INTENT OF REPRESENTED WORK, IT IS THE ARCHITECTS RESPONSIBILITY TO MAKE THE NECESSARY CHANGES TO THESE PRINTS.
7	REQUESTS FOR REVISIONS AFTER GLAZING CONTRACTOR HAS BEEN AUTHORIZED TO PROCEED WITH FABRICATION WILL BE SUBJECT TO A MINIMUM HANDLING CHARGE PLUS THE COST OF FABRICATED MATERIALS.
8	FABRICATION WILL NOT BEGIN UNTIL GLAZING CONTRACTOR HAS RECEIVED A SIGNED COPY OF THESE DRAWINGS.
9	IT IS THE ARCHITECTS RESPONSIBILITY TO VERIFY PARTICULAR REQUIREMENTS INCLUDING, BUT NOT LIMITED TO: MATERIAL TYPE, GLASS THICKNESS, FRAMING MATERIAL, FRAMING FINISHES, DOOR TYPES, HARDWARE SCHEDULE, ETC.
10	ONCE APPROVED BY THE ARCHITECT THESE SHOP DRAWING WILL BECOME A PART OF THE CONTRACT BETWEEN GLAZING CONTRACTOR AND THE GENERAL CONTRACTOR AND ALL WORK SHALL BE COMPLETED AS IN SAID DETAILED SHOP DRAWINGS. THESE SHOP DRAWINGS SHALL SUPERSEDE ALL CONTRACT DRAWINGS AND SPECIFICATIONS.
11	ERECTION AND GLAZING PROCEDURES ARE TO BE IN ACCORDANCE WITH PROCEDURES IN THE INSTALLATION MANUAL.
12	ALL DIMENSIONS REQUIRED FOR SHALL BE FIELD VERIFIED OR RELEASED BY THE GENERAL CONTRACTOR PRIOR TO FABRICATION.
13	

FRAMING SCHEDULE		
SYSTEM	DESCRIPTION	SYSTEM FINISH
1	OLDCASTLE 3000 SERIES, CG, SS, 2" X 4-1/2"	BRONZE ANODIZED
2	OLDCASTLE 350 MEDIUM STILE DOOR	BRONZE ANODIZED

GLAZING SCHEDULE	
GLASS TYPE	DESCRIPTION
A	1" TEMPERED INSULATED IGU CONSISTING OF: $\frac{1}{4}$ " TEMPERED CLEAR SOLARBAN 60 $\frac{3}{8}$ " AIR FILL $\frac{1}{4}$ " TEMPERED CLEAR
B	1" TEMPERED INSULATED IGU CONSISTING OF: $\frac{1}{4}$ " TEMPERED CLEAR $\frac{3}{8}$ " AIR FILL $\frac{1}{4}$ " TEMPERED CLEAR
C	$\frac{1}{2}$ " MONOLITHIC TEMPERED CLEAR
D	1" TEMPERED INSULATED OBSCURED

SEALANT SCHEDULE		
TYPE	DESCRIPTION	COLOR
SEAL1	DOWSIL 795	BLACK

SHEET INDEX	
SHEET	DESCRIPTION
101	COVER SHEET
102	DOOR HARDWARE SCHEDULE
201	FLOOR PLANS
301 - 303	STOREFRONT ELEVATIONS
401 - 405	STOREFRONT DETAILS

LEGEND	
DESIGNATION	DESCRIPTION
CS	CAULK SPACE
DLO	DAY LIGHT OPENING
DO	DOOR OPENING
FF	FINISHED FLOOR
FS	FRAME SIZE
NTS	NOT TO SCALE
RO	ROUGH OPENING
DFW	DOOR FRAME WIDTH
DFH	DOOR FRAME HEIGHT

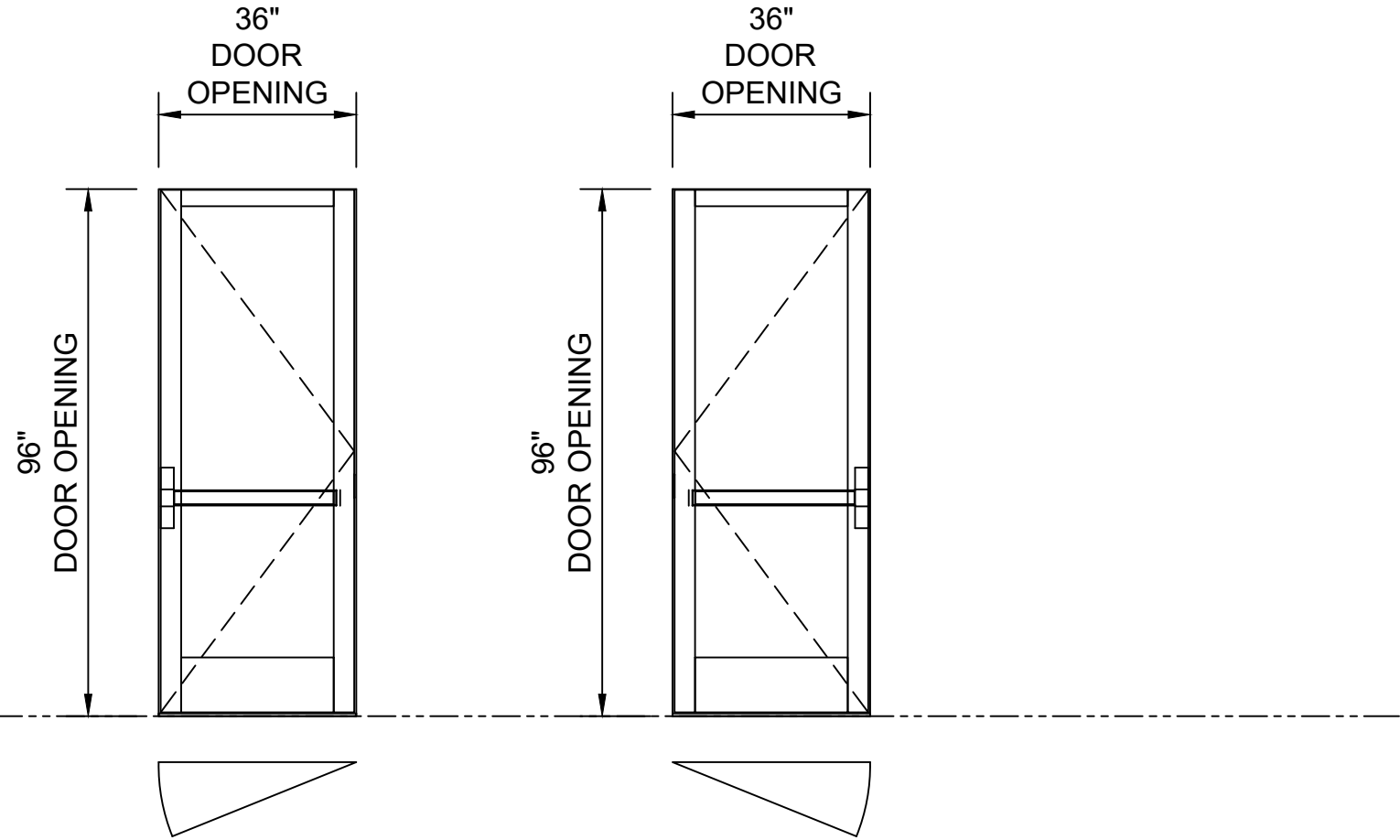
[illegible]

SHINY SHELL CARWASH - KEARNS
4059 WEST 4715 SOUTH
KEARNS, UT 84118

DATE:	X
SCALE:	N/A
DRAWN BY:	E.BARILAR
JOB #:	OCG050
SHEET:	

101

DOOR HARDWARE SCHEDULE					
	QTY	COMPONENT	PART NO.	FINISH	MANUFACTURER
017	3	BUTT HINGES	BH1	DARK BRONZE	OLDCASTLE
018A	1	RIM PANIC W/ LEVER	3970 / L3	DARK BRONZE	FIRST CHOICE
018B	1	SURFACE CLOSER	4040XP	DARK BRONZE	LCN
019	1	THRESHOLD	TH43	CLEAR	OLDCASTLE
	1	DOOR SWEEP	V231	N/A	OLDCASTLE



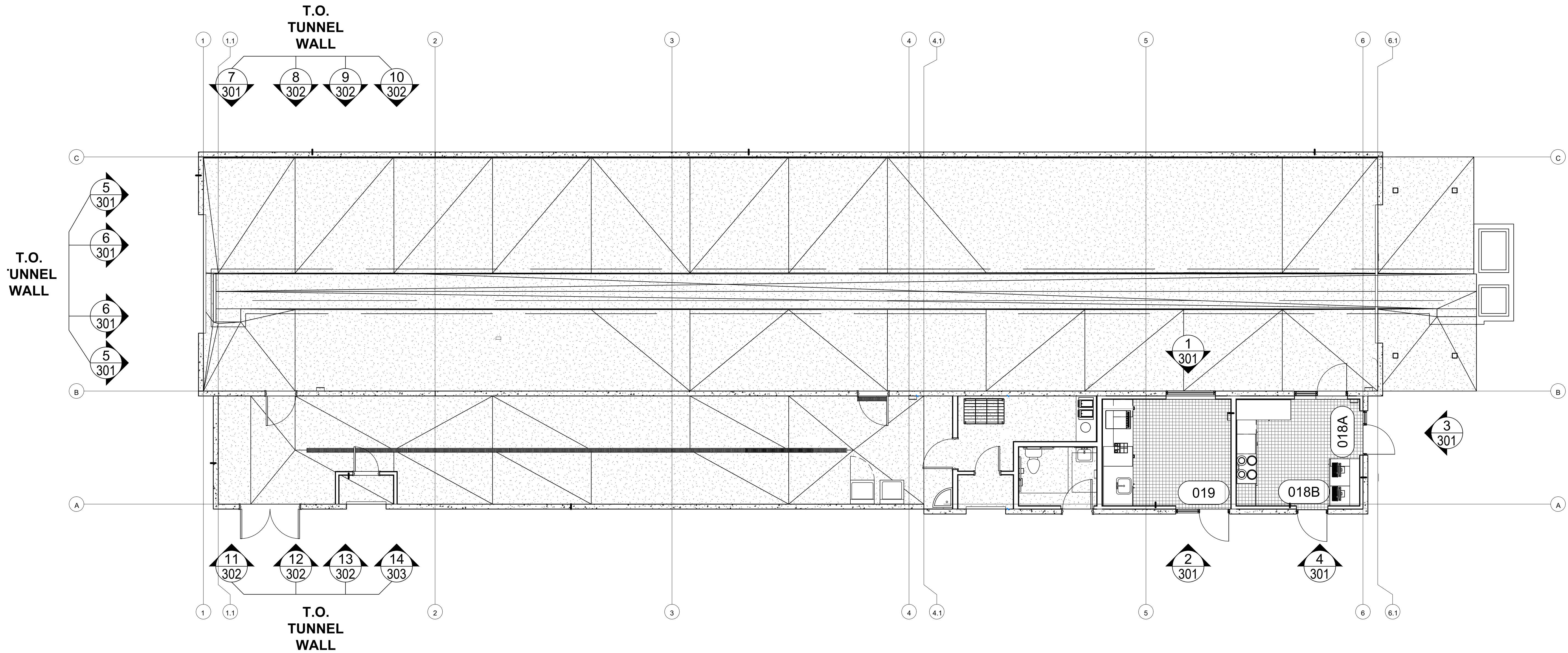
SHINY SHELL CARWASH - KEARNS
4059 WEST 4715 SOUTH
KEARNS, UT 84118

DATE: X
SCALE: N/A
DRAWN BY: E.BARILAR
JOB #: OCG050

SHEET:

REVISIONS	DATE
ORIGINAL ISSUE	09/17/23

0						
---	--	--	--	--	--	--



P1 MAIN LEVEL FLOOR PLAN
ARCH REF: A101

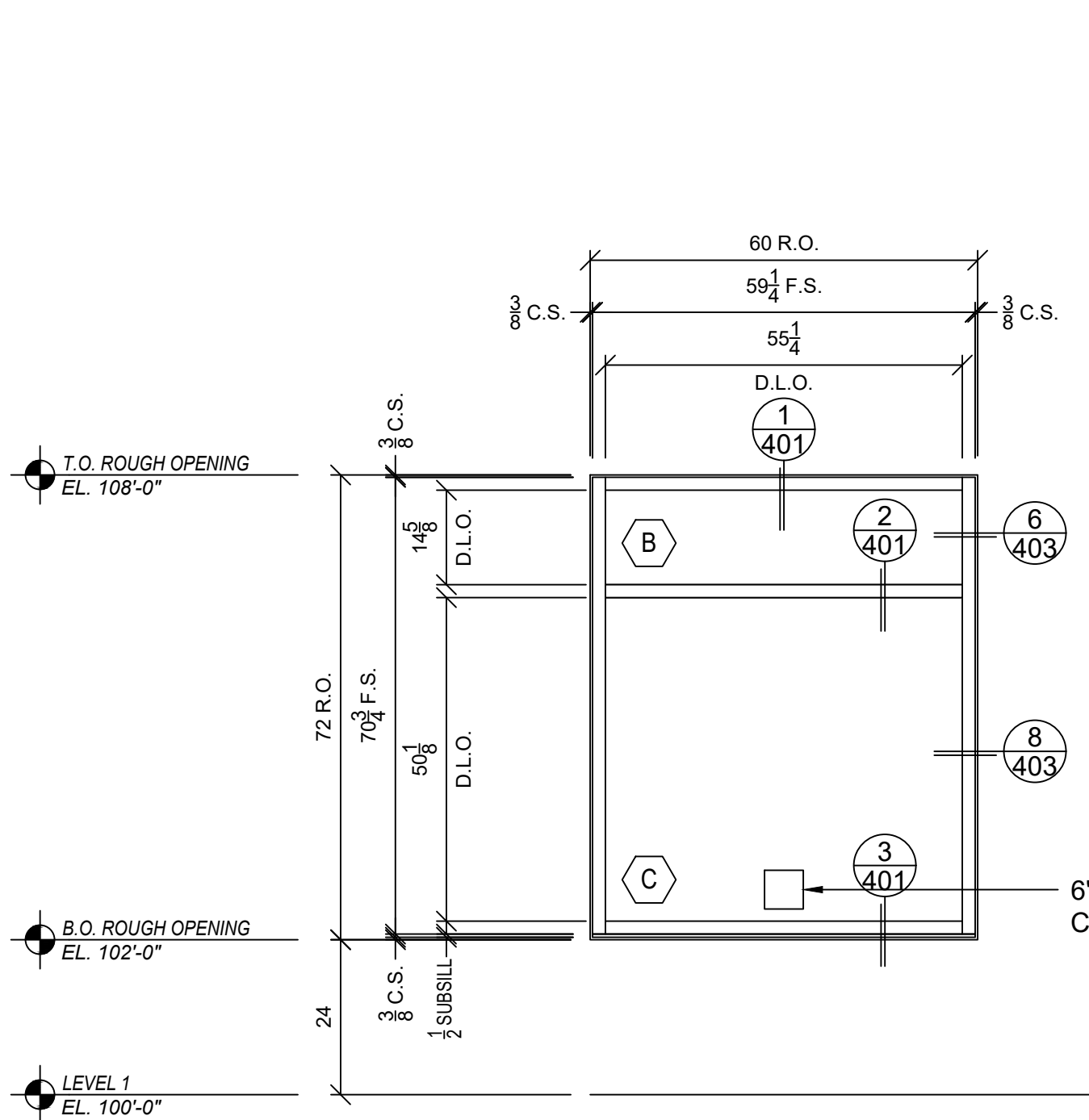
REVISIONS	DATE
ORIGINAL ISSUE	09/17/23

--

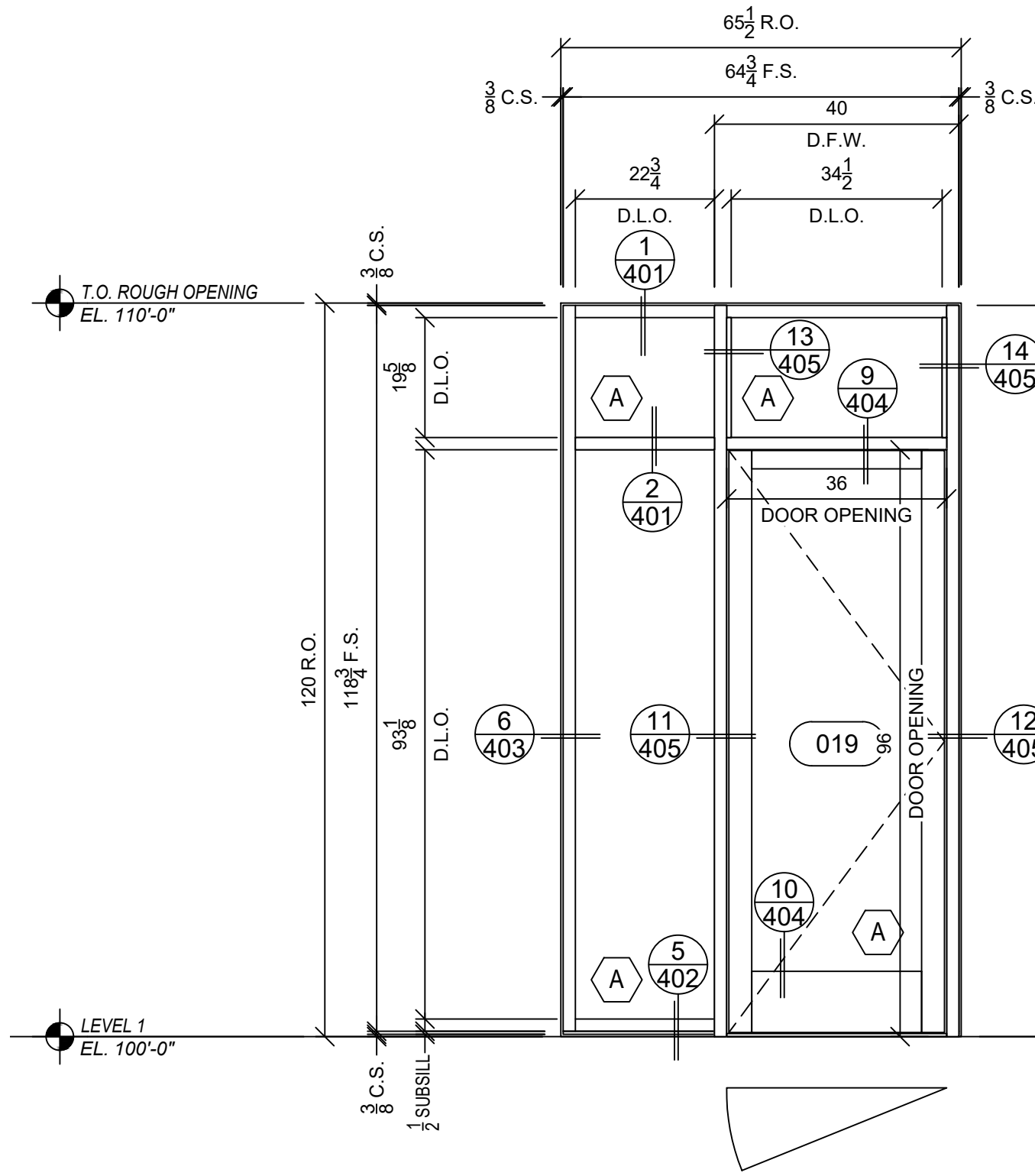
SHINY SHELL CARWASH - KEARNS
4059 WEST 4715 SOUTH
KEARNS, UT 84118

DATE:	X
SCALE:	N/A
DRAWN BY:	E.BARILAR
JOB #:	OCG050

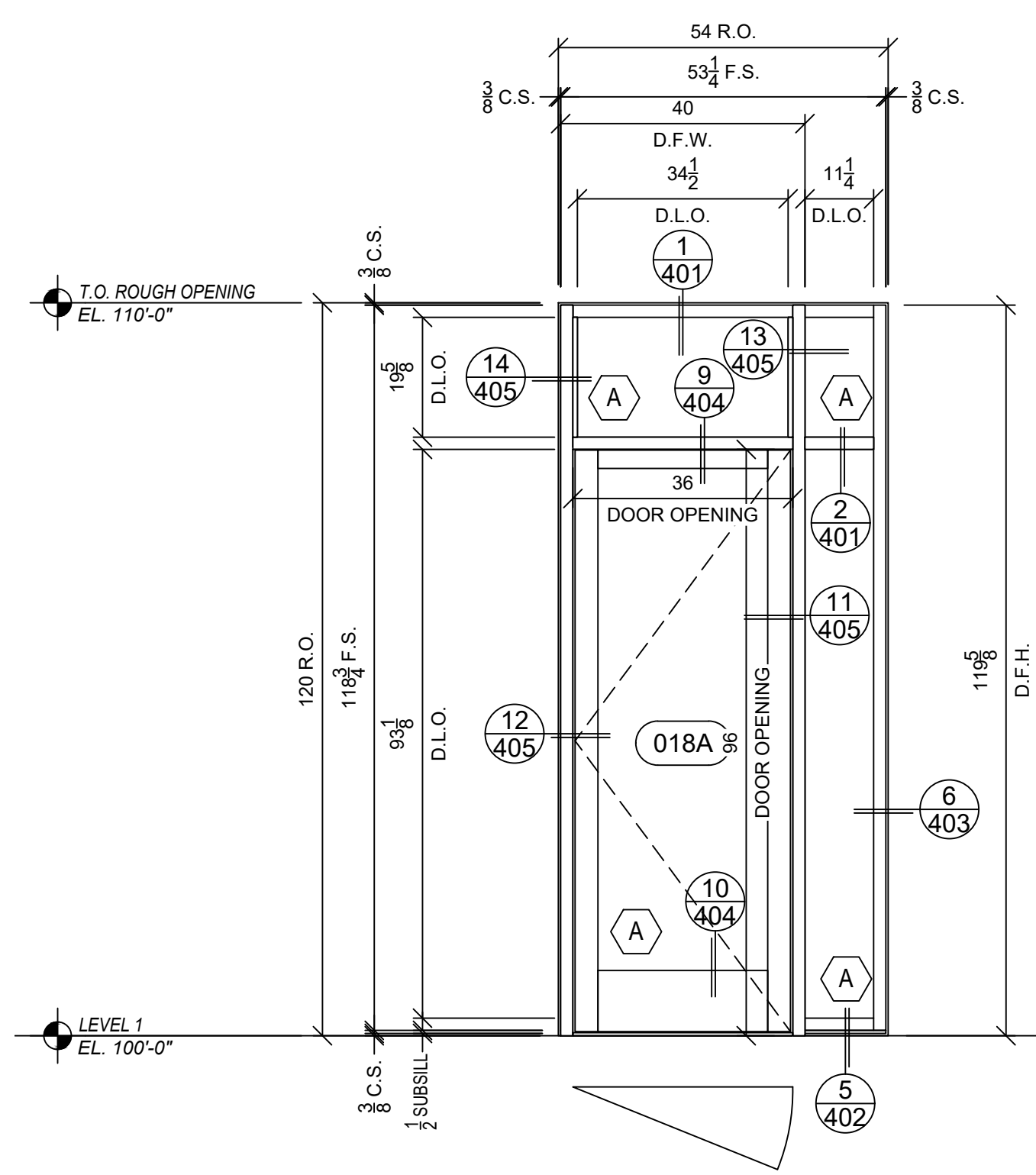
SHEET:



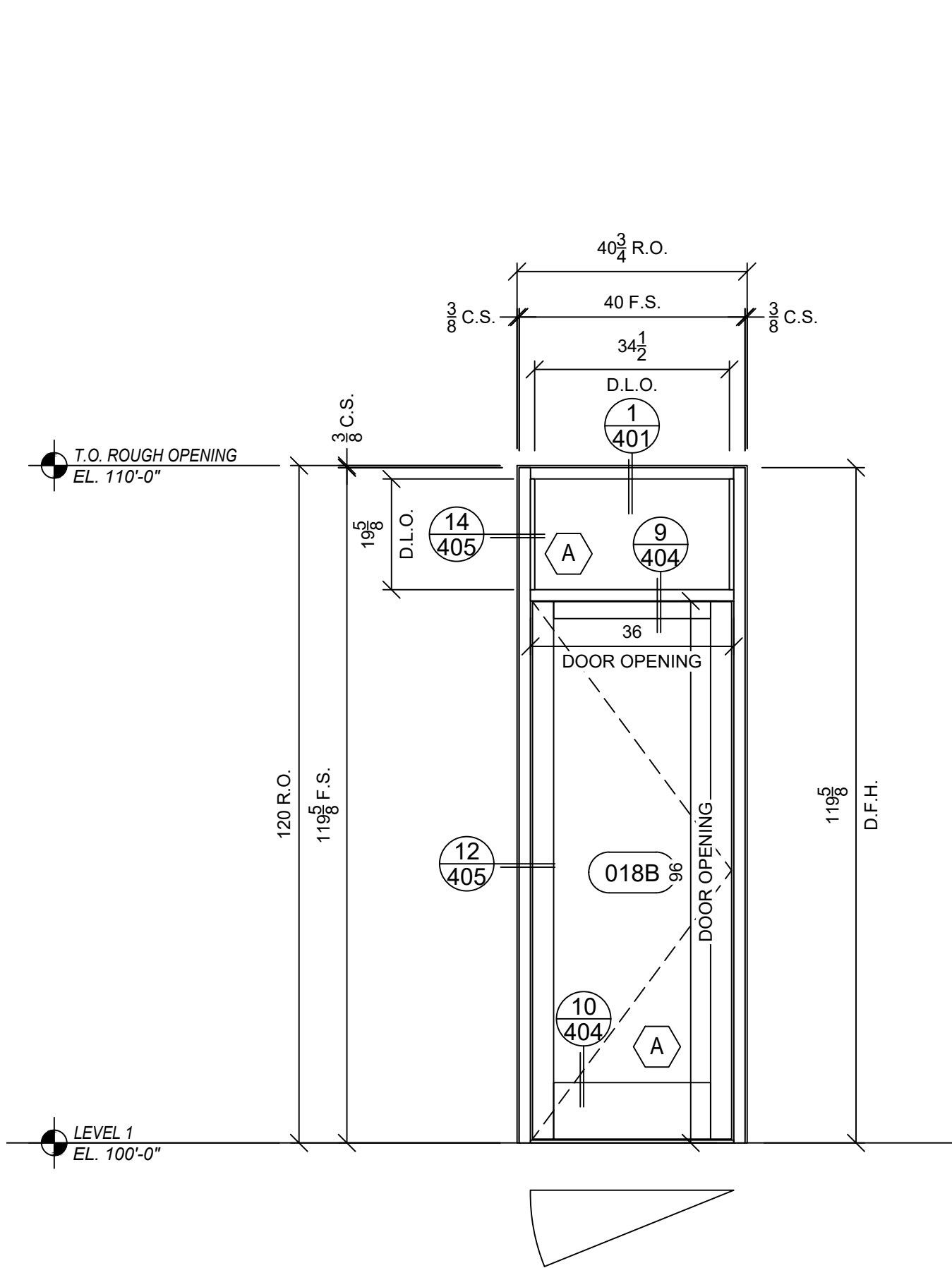
1 ELEVATION W100
ARCH REF: A601
QTY: (1)
OLDCASTLE 3000 SERIES, CG, SS, 2" X 4-1/2"



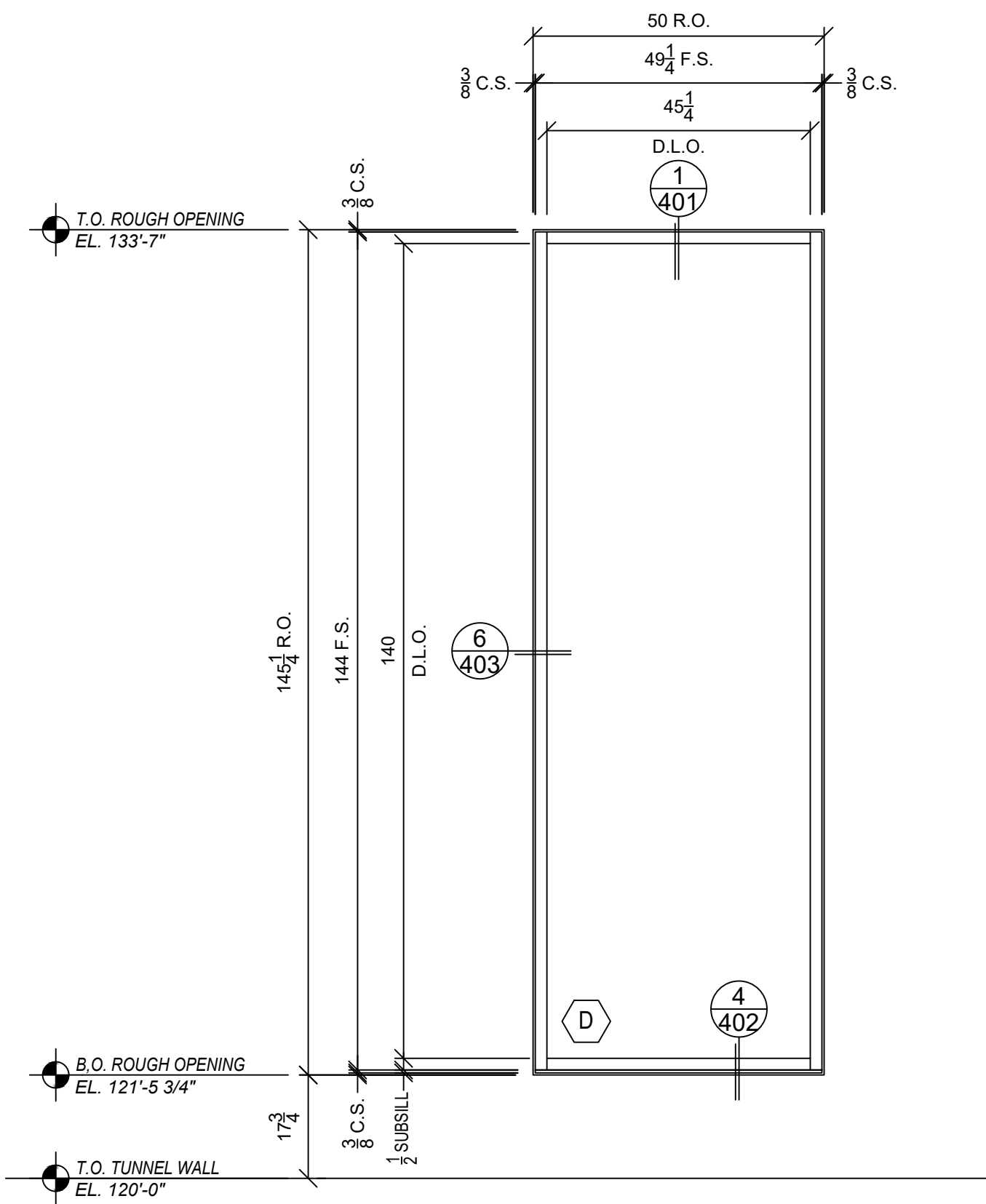
2 ELEVATION W101
ARCH REF: A601
QTY: (1)
OLDCASTLE 3000 SERIES, CG, SS, 2" X 4-1/2"
OLDCASTLE 350 MEDIUM STILE DOOR



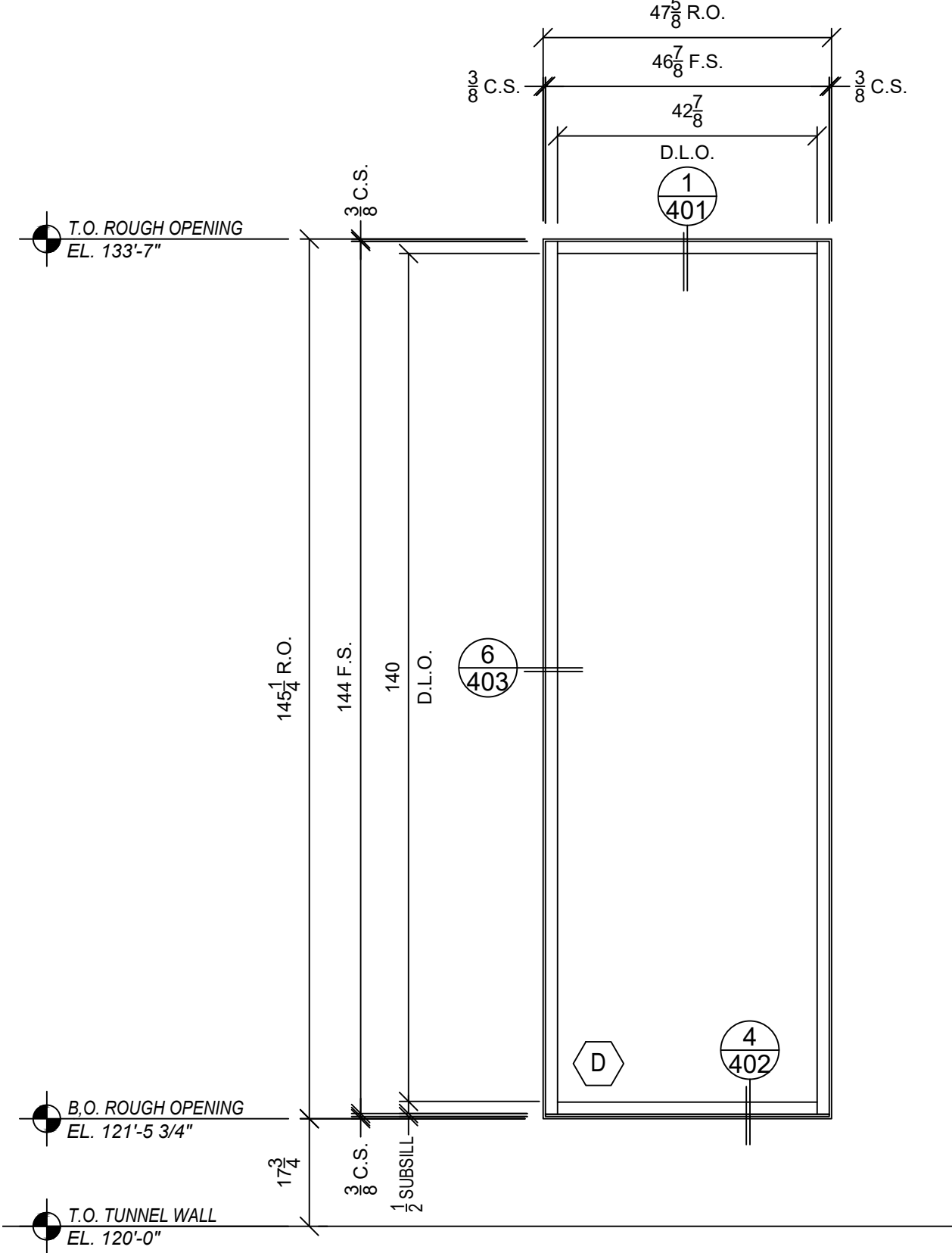
3 ELEVATION W102
ARCH REF: A601
QTY: (1)
OLDCASTLE 3000 SERIES, CG, SS, 2" X 4-1/2"
OLDCASTLE 350 MEDIUM STILE DOOR



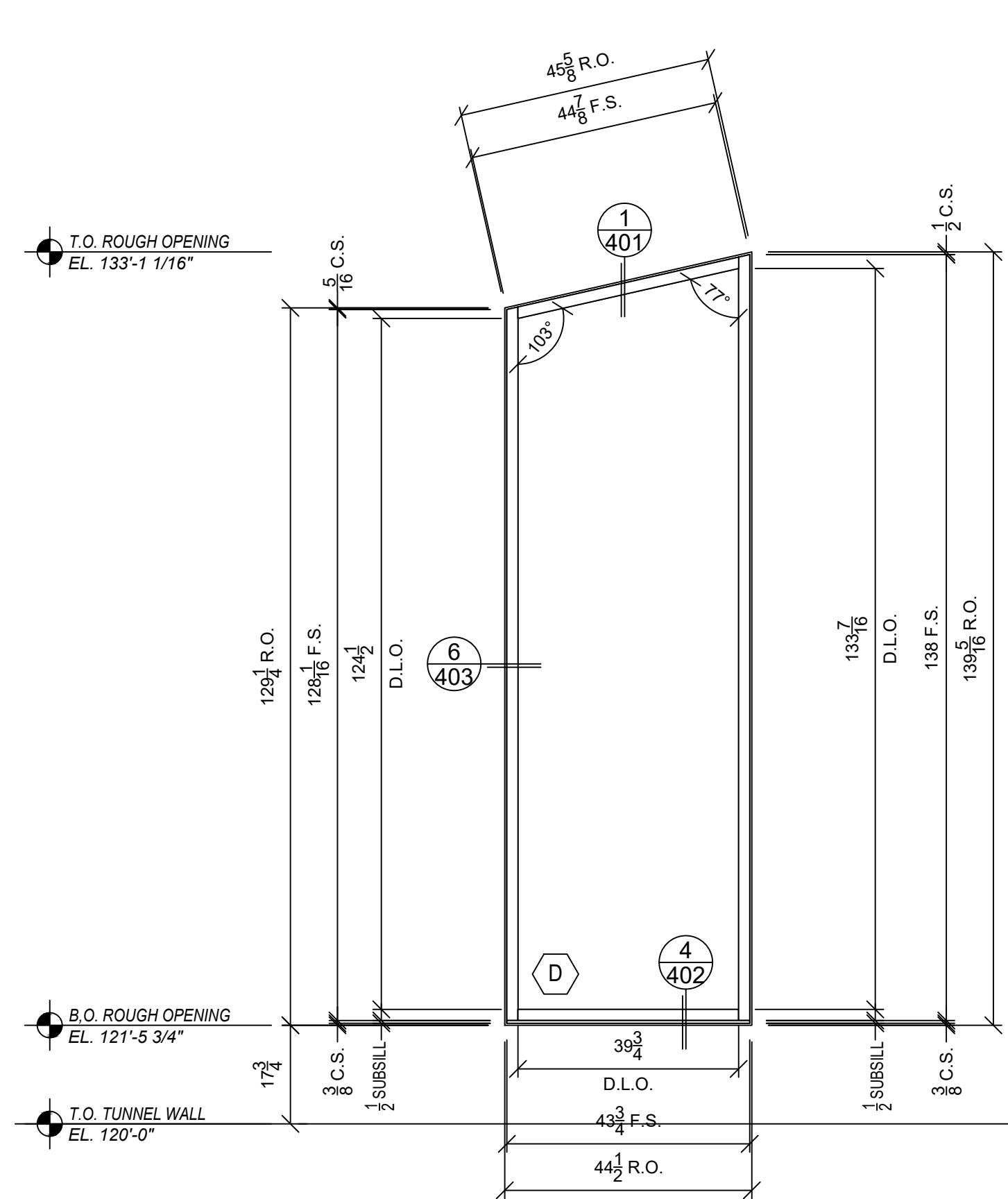
4 ELEVATION W103
ARCH REF: A601
QTY: (1)
OLDCASTLE 3000 SERIES, CG, SS, 2" X 4-1/2"
OLDCASTLE 350 MEDIUM STILE DOOR



5 ELEVATION W104
ARCH REF: A601
QTY: (1)
OLDCASTLE 3000 SERIES, CG, SS, 2" X 4-1/2"



6 ELEVATION W105
ARCH REF: A601
QTY: (1)
OLDCASTLE 3000 SERIES, CG, SS, 2" X 4-1/2"



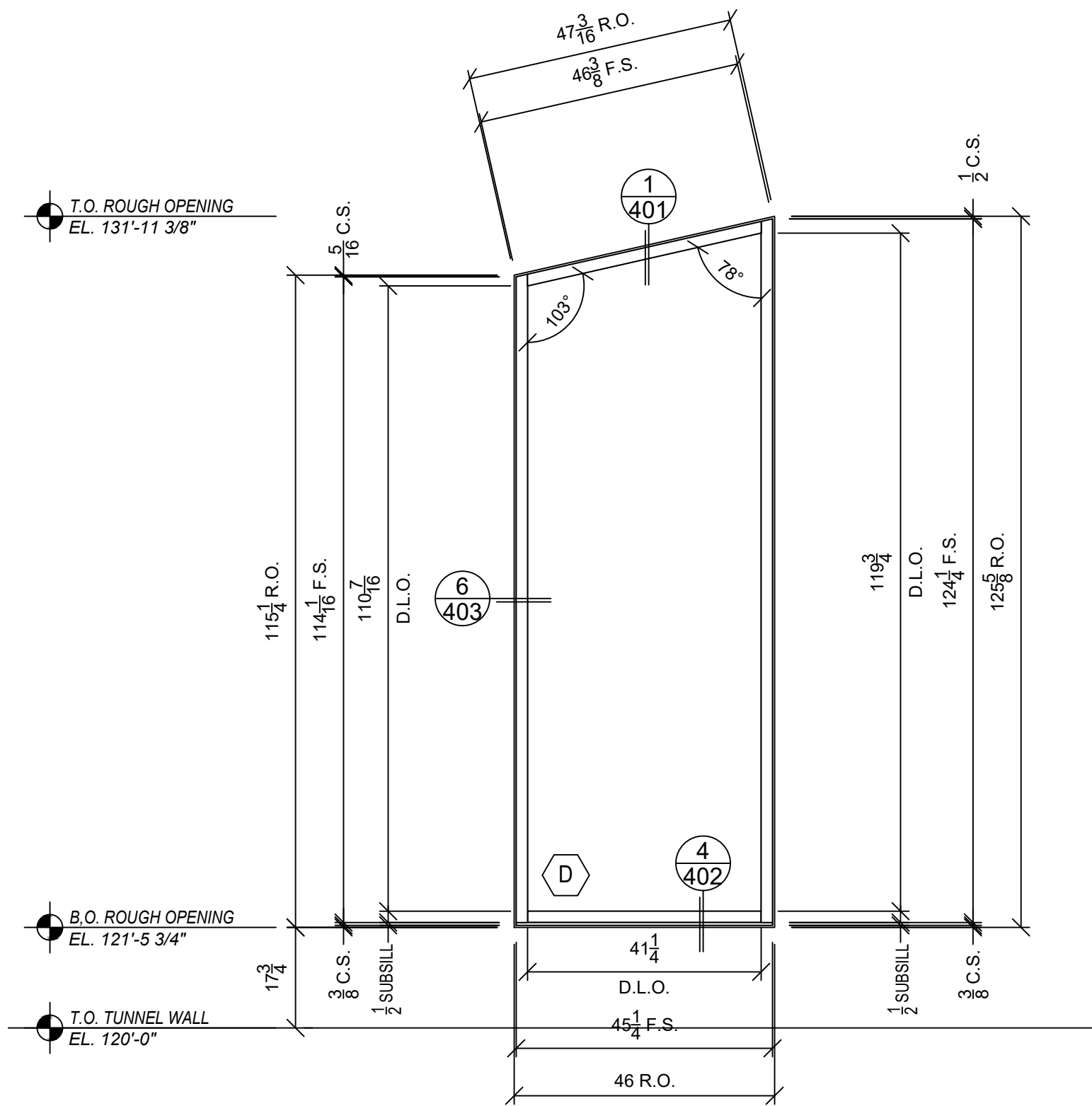
7 ELEVATION W106
ARCH REF: A601
QTY: (1)
OLDCASTLE 3000 SERIES, CG, SS, 2" X 4-1/2"

SHINY SHELL CARWASH - KEARNS
4059 WEST 4715 SOUTH
KEARNS, UT 84118

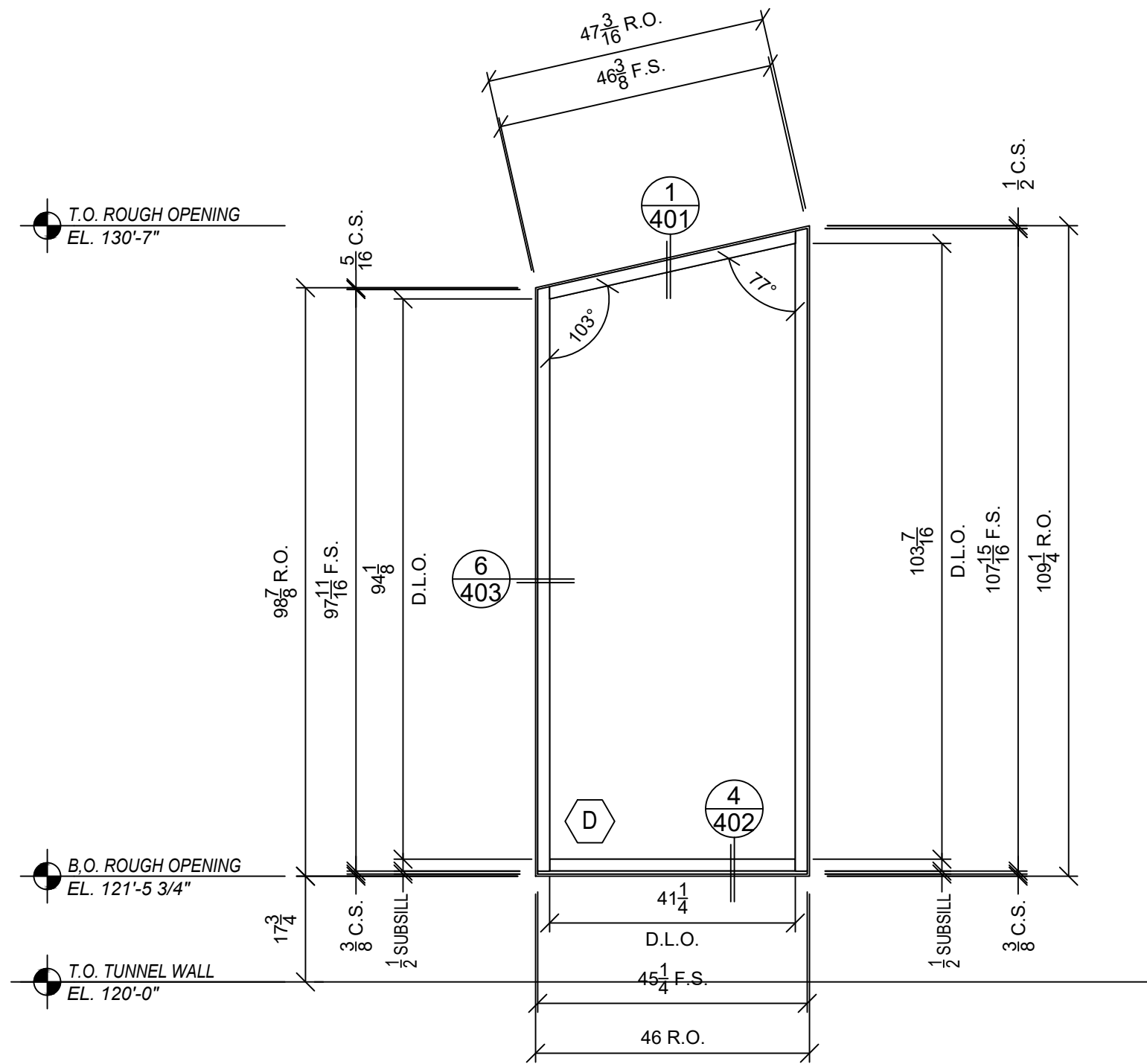
DATE	09/17/23
REVISIONS	ORIGINAL ISSUE
0	

DATE: X
SCALE: 1/2" = 1'-0"
DRAWN BY: E.BARILAR
JOB #: OCG050
SHEET:

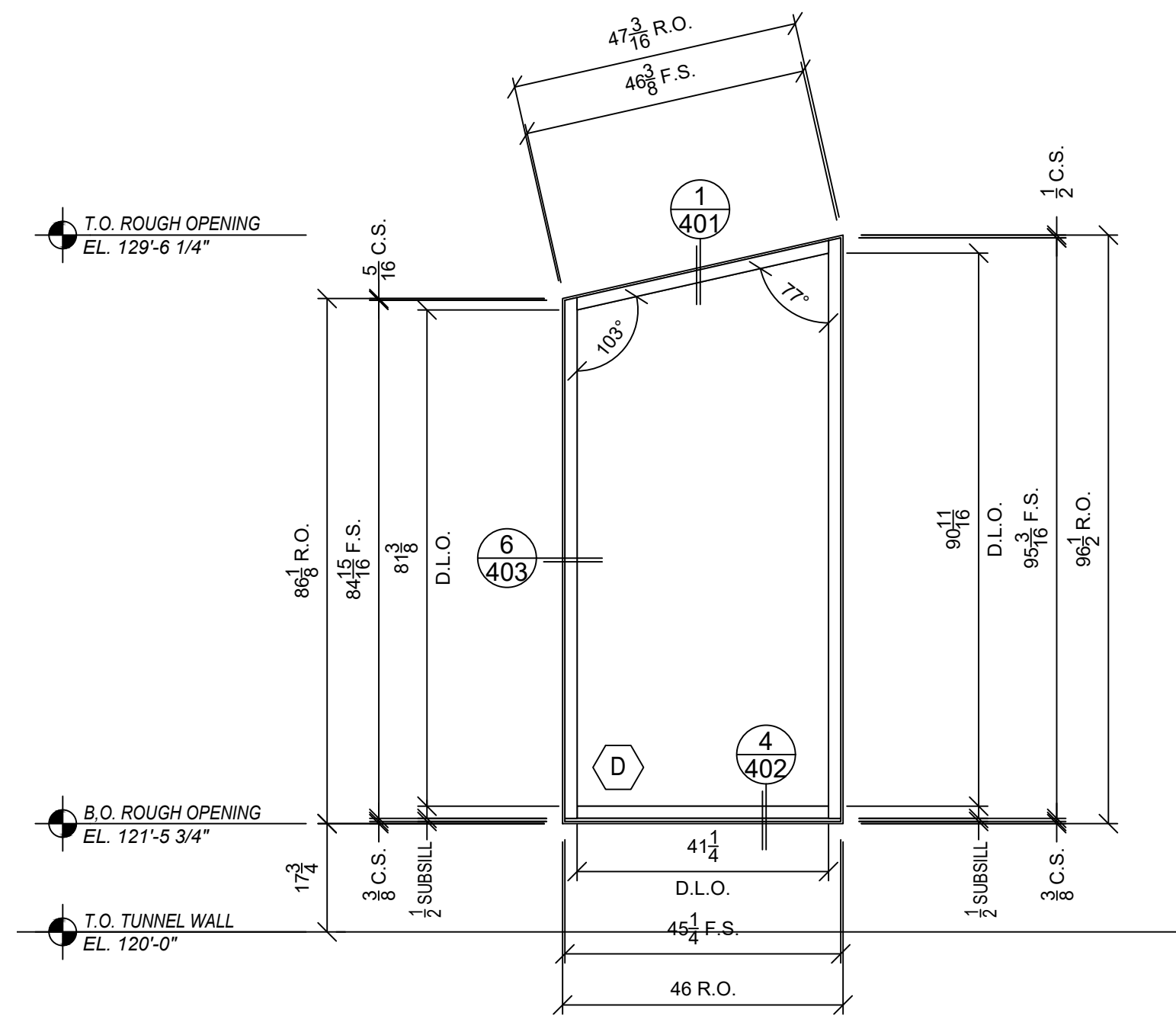
301



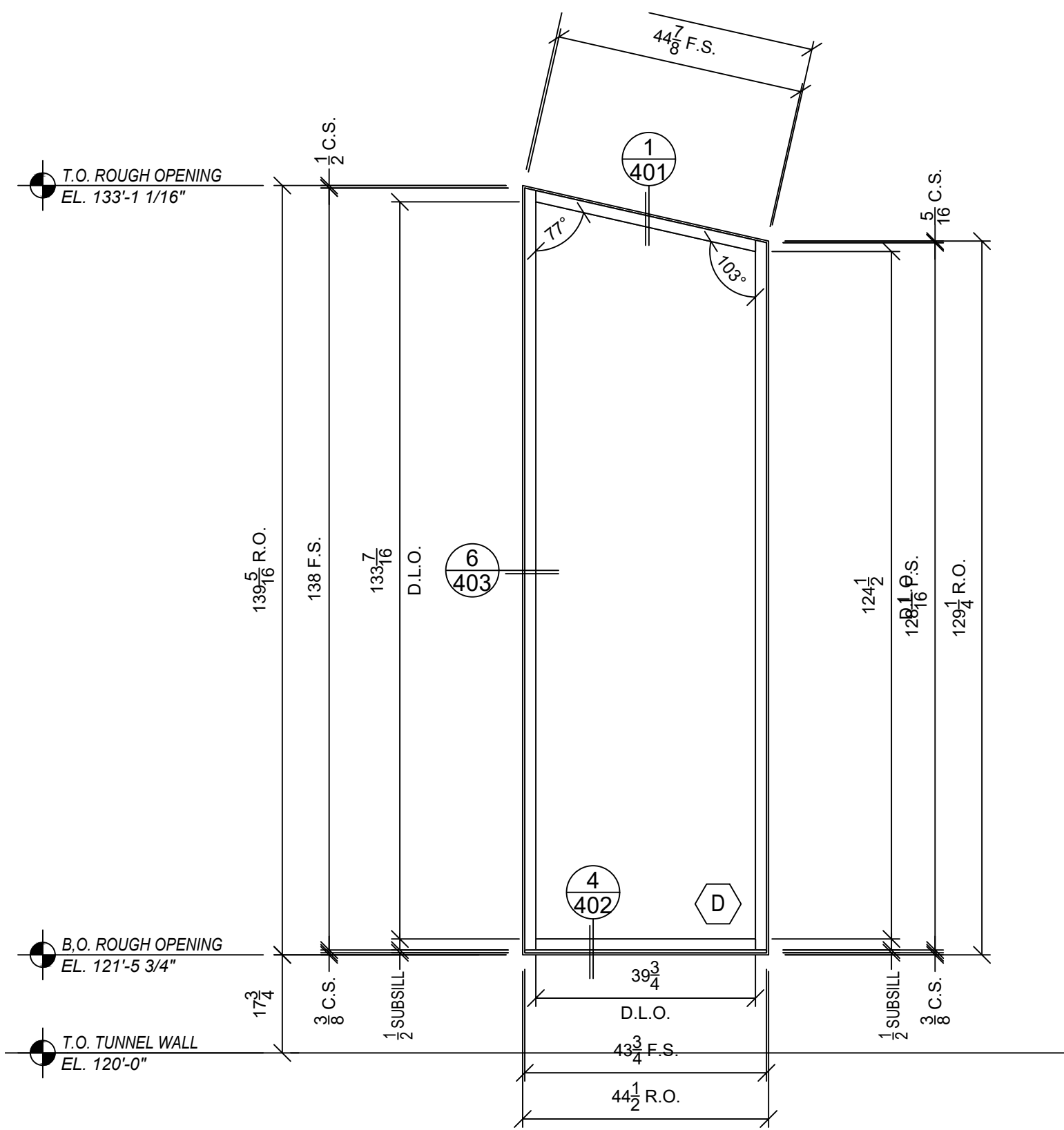
8 ELEVATION W107
ARCH REF: A601
QTY: (1)
OLDCASTLE 3000 SERIES, CG, SS, 2" X 4-1/2"



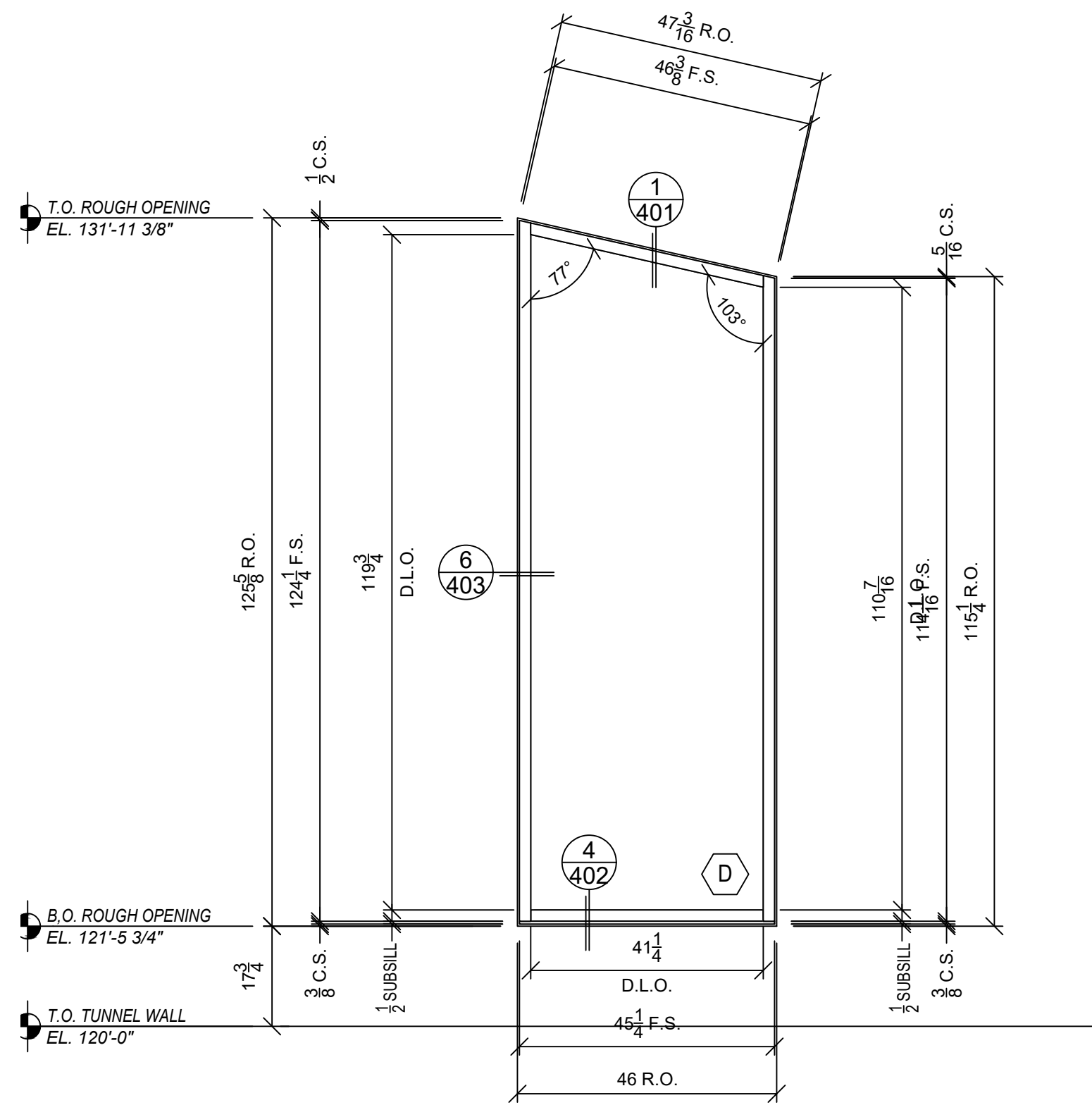
9 ELEVATION W108
ARCH REF: A601
QTY: (1)
OLDCASTLE 3000 SERIES, CG, SS, 2" X 4-1/2"



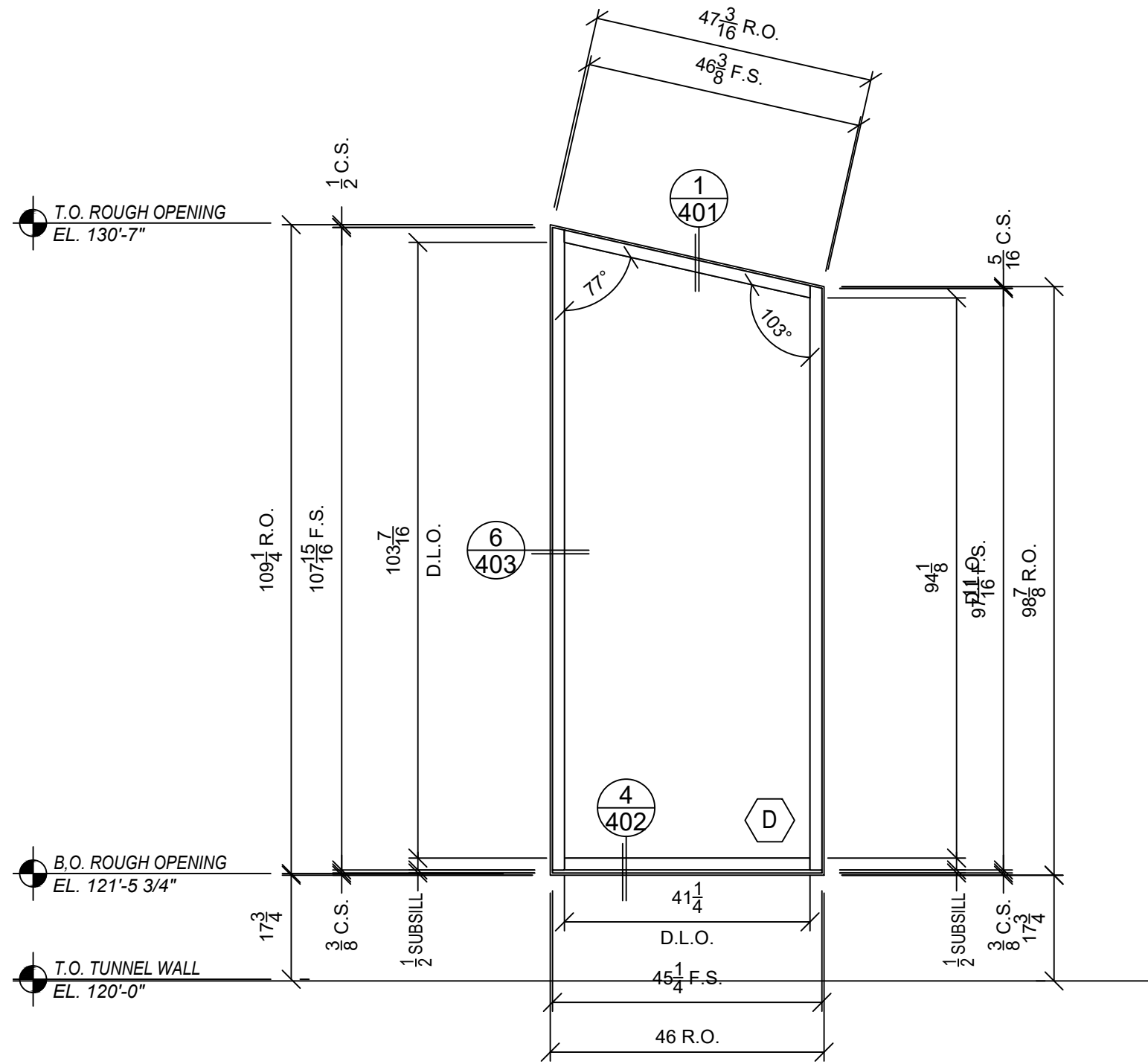
10 ELEVATION W109
ARCH REF: A601
QTY: (1)
OLDCASTLE 3000 SERIES, CG, SS, 2" X 4-1/2"



11 ELEVATION W110
ARCH REF: A601
QTY: (1)
OLDCASTLE 3000 SERIES, CG, SS, 2" X 4-1/2"



12 ELEVATION W111
ARCH REF: A601
QTY: (1)
OLDCASTLE 3000 SERIES, CG, SS, 2" X 4-1/2"



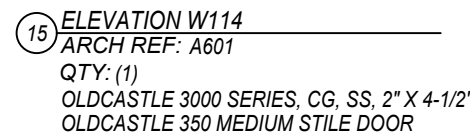
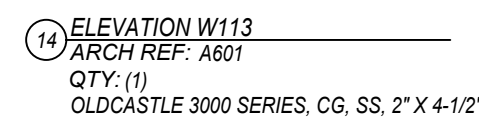
13 ELEVATION W112
ARCH REF: A601
QTY: (1)
OLDCASTLE 3000 SERIES, CG, SS, 2" X 4-1/2"

REVISIONS	DATE
ORIGINAL ISSUE	09/17/23

SHINY SHELL CARWASH - KEARNS
4059 WEST 4715 SOUTH
KEARNS, UT 84118

DATE:	X
SCALE:	1/2" = 1'-0"
DRAWN BY:	E.BARILAR
JOB #:	OCG050
SHEET:	

302

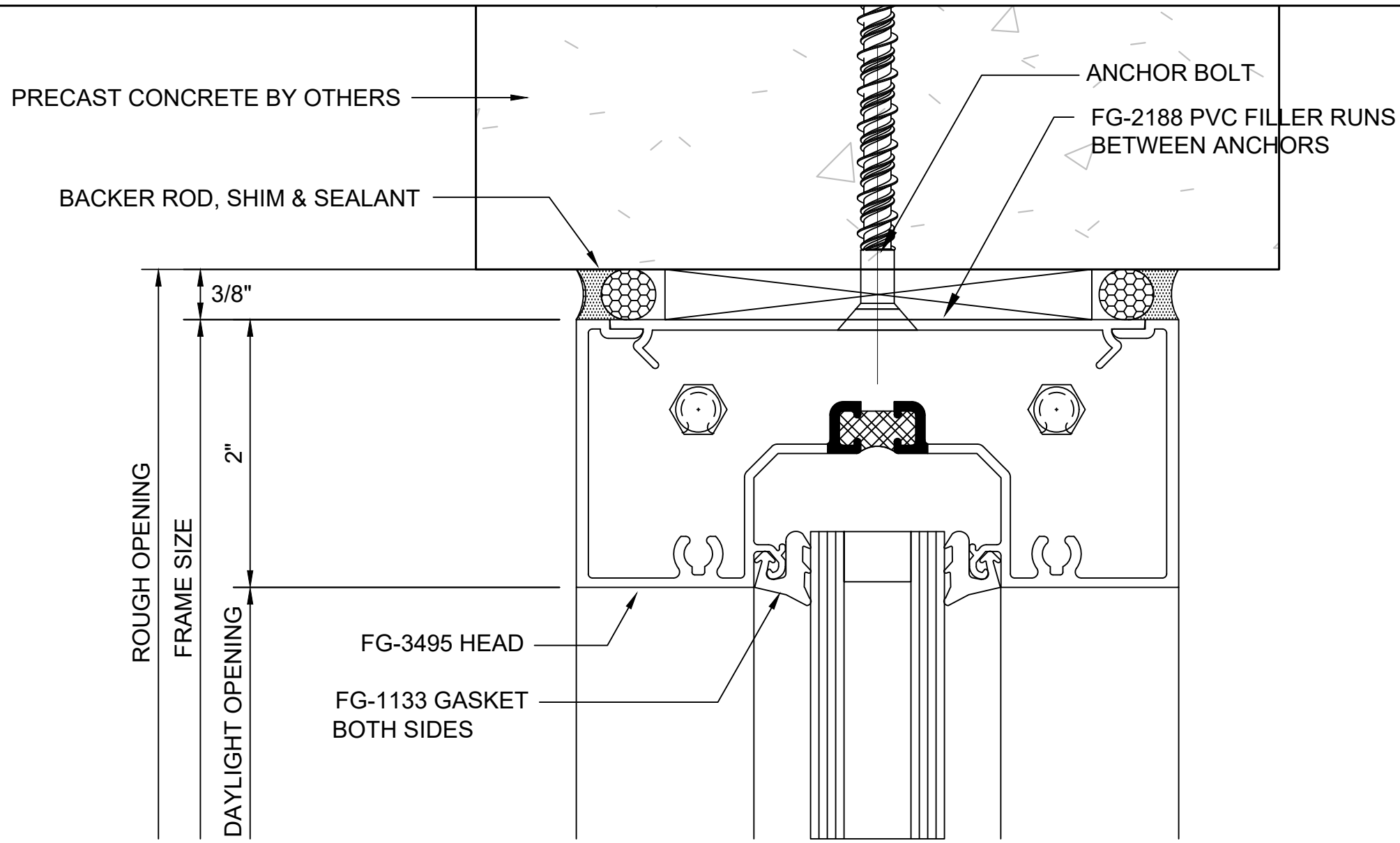


DATE:	X
SCALE:	1/2" = 1'-0"
DRAWN BY:	E.BARILAR
JOB #:	OCG050
SHEET:	

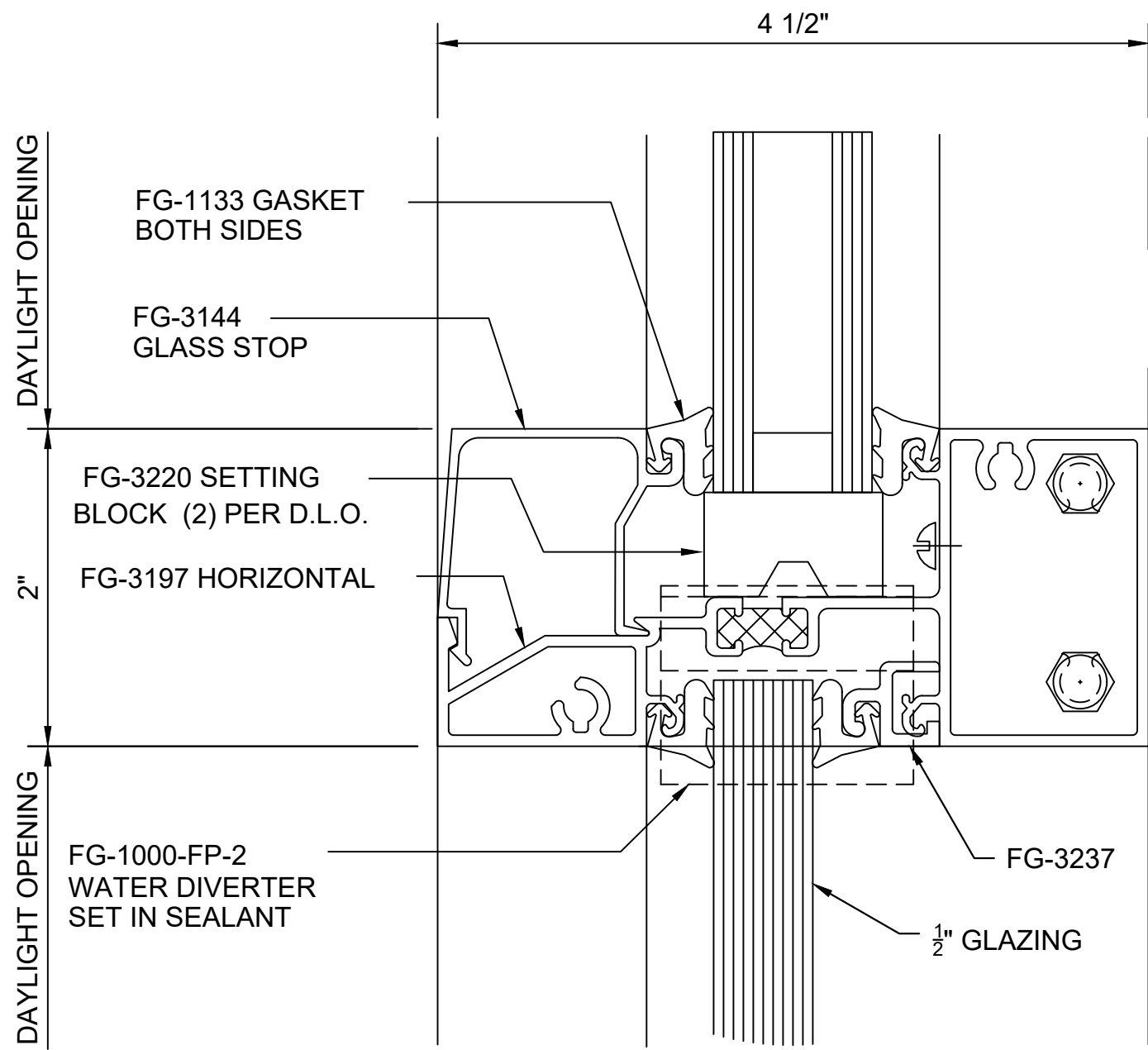
303

#	REVISIONS	DATE
0	ORIGINAL ISSUE	09/17/23

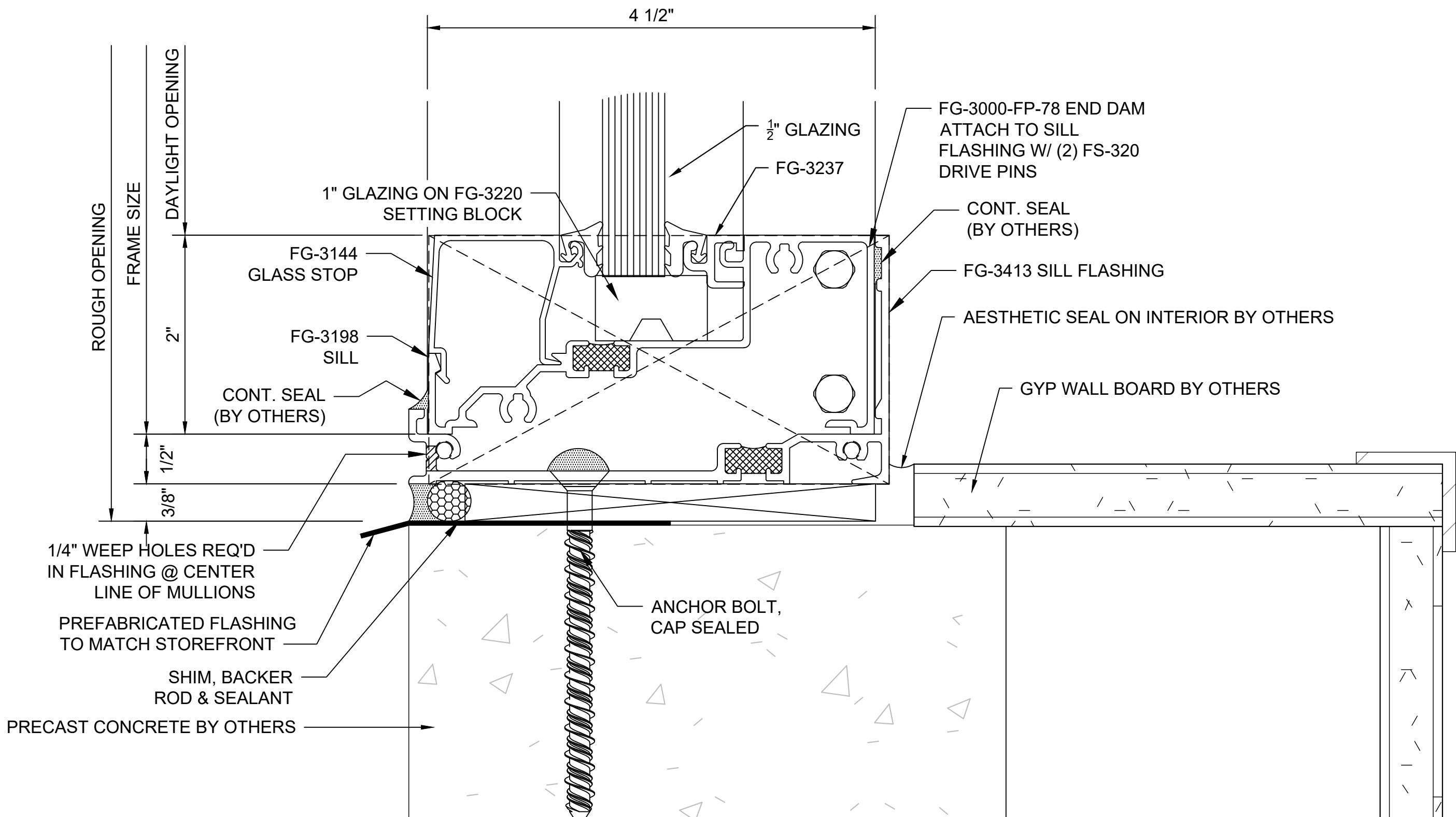
1 STOREFRONT HEAD
ARCH REF: B5/A501
OLDCASTLE 3000 SERIES, CG, SS, 2" X 4-1/2"



2 STOREFRONT HORIZONTAL
ARCH REF: N/A
OLDCASTLE 3000 SERIES, CG, SS, 2" X 4-1/2"



3 STOREFRONT SILL @ TUNNEL
ARCH REF: B3/A501
OLDCASTLE 3000 SERIES, CG, SS, 2" X 4-1/2"



SHINY SHELL CARWASH - KEARNS
4059 WEST 4715 SOUTH
KEARNS, UT 84118

REVISIONS	DATE
ORIGINAL ISSUE	09/17/23

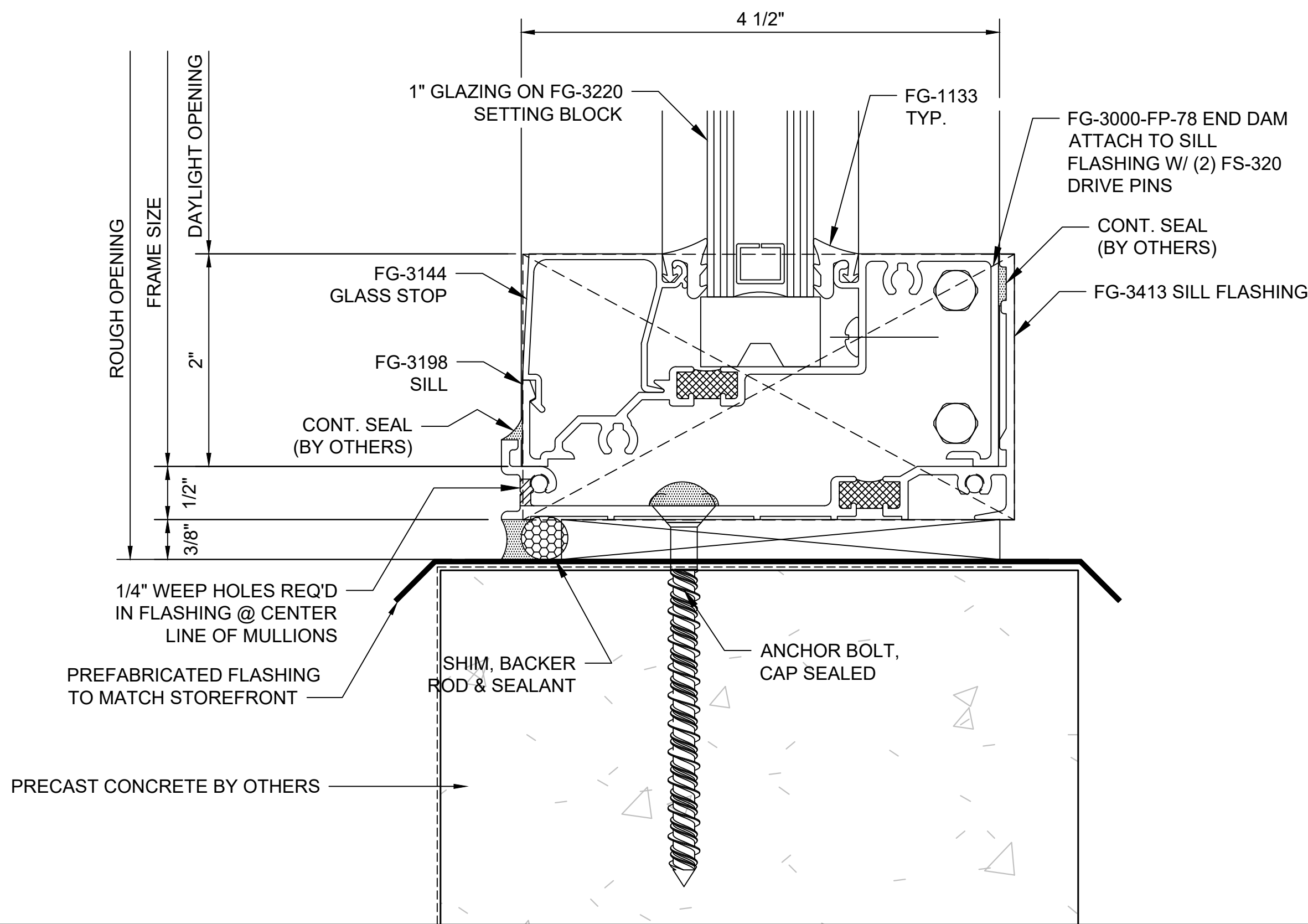
0							
---	--	--	--	--	--	--	--

DATE:	X
SCALE:	1:1
DRAWN BY:	E.BARILAR
JOB #:	OCG050

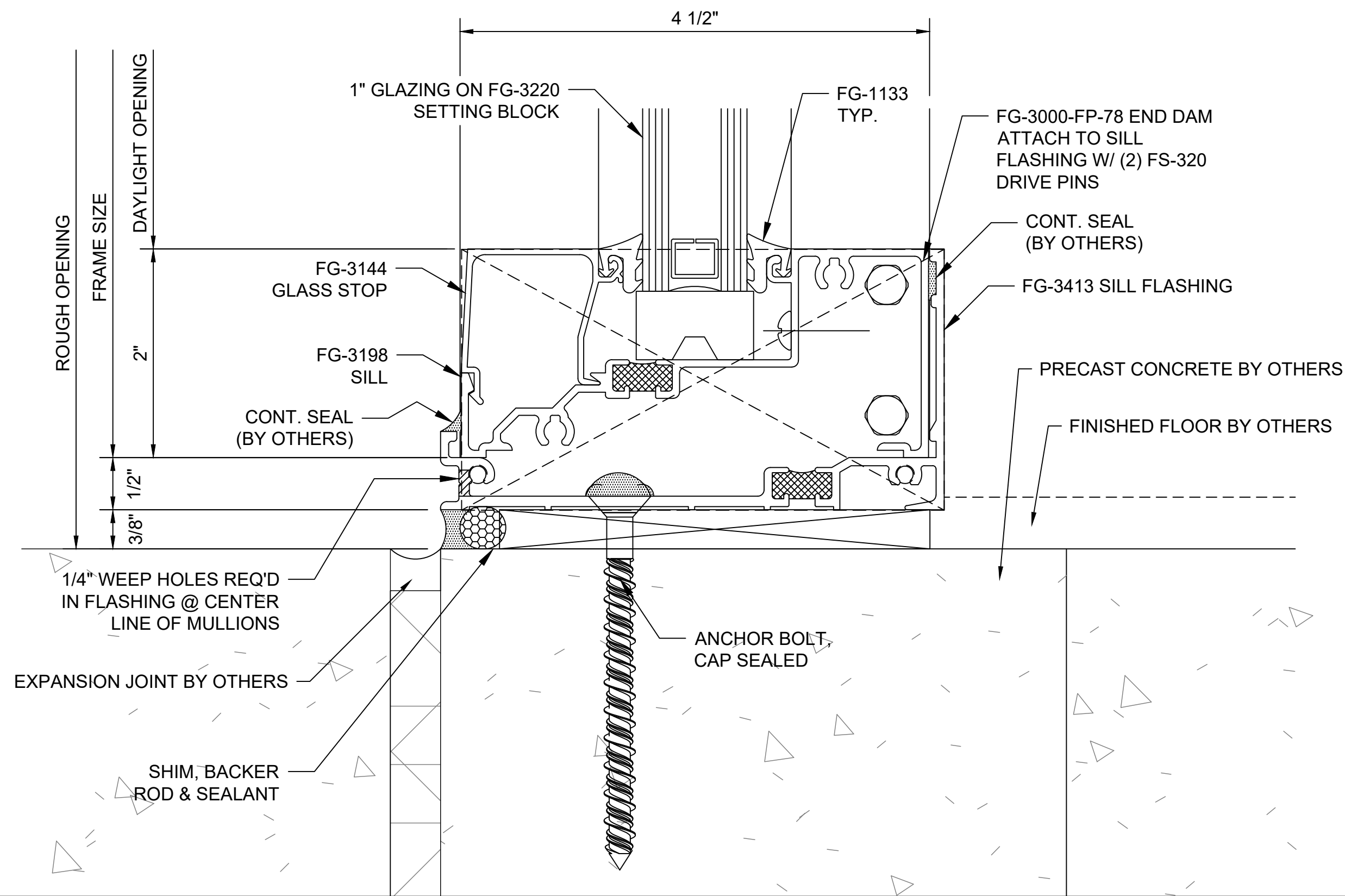
SHEET:

401

4 STOREFRONT SILL
ARCH REF: B5/A501
OLDCASTLE 3000 SERIES, CG, SS, 2" X 4-1/2"



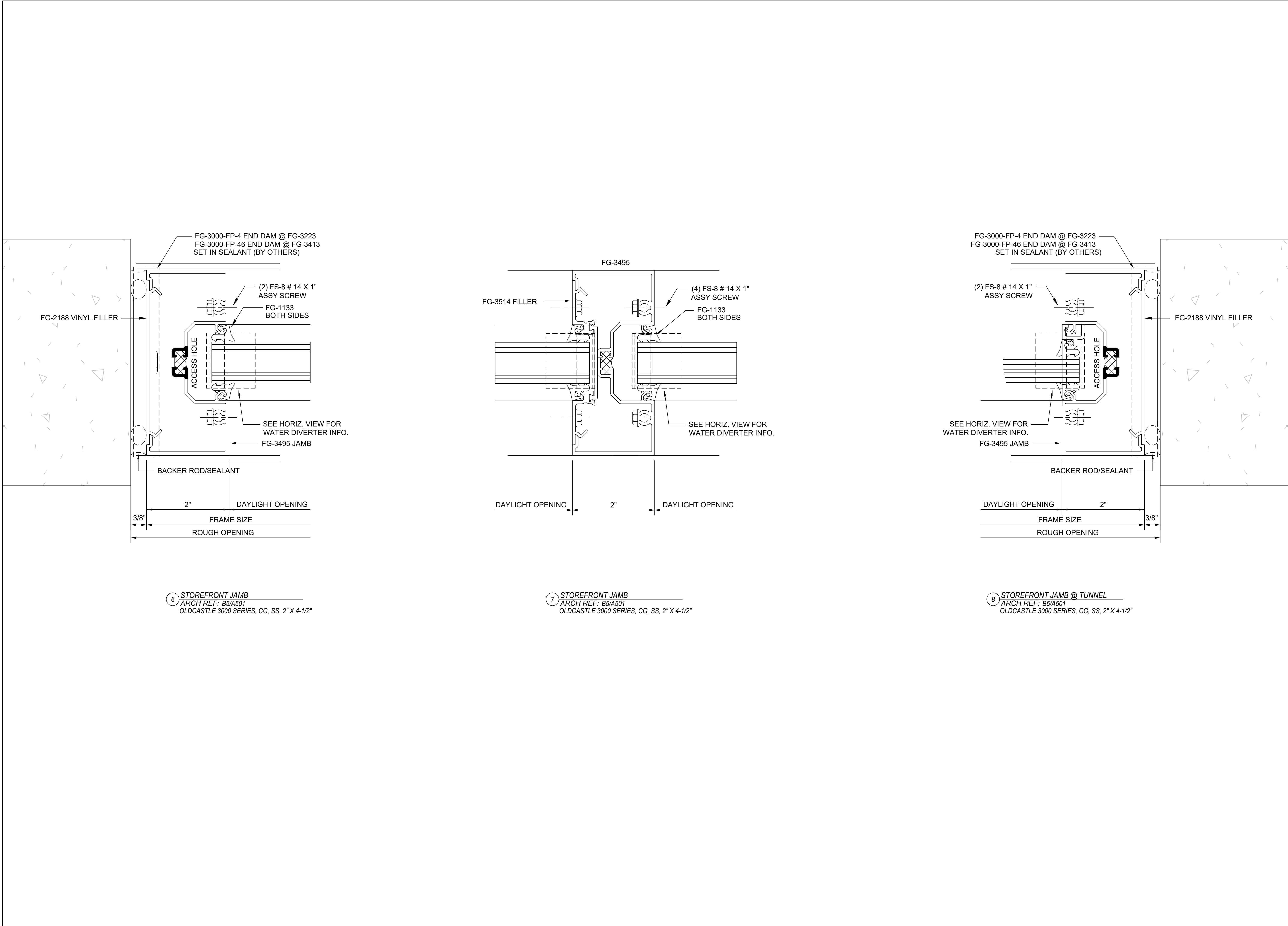
5 STOREFRONT SILL ON GRADE
ARCH REF: B6/A501
OLDCASTLE 3000 SERIES, CG, SS, 2" X 4-1/2"



SHINY SHELL CARWASH - KEARNS
4059 WEST 4715 SOUTH
KEARNS, UT 84118

REVISIONS	DATE
ORIGINAL ISSUE	09/17/23

DATE: X
SCALE: 1:1
DRAWN BY: E.BARILAR
JOB #: OCG050
SHEET:



⑥ STOREFRONT JAMB
ARCH REF: B5/A501
OLDCASTLE 3000 SERIES, CG, SS, 2" X 4-1/2"

⑦ STOREFRONT JAMB
ARCH REF: B5/A501
OLDCASTLE 3000 SERIES, CG, SS, 2" X 4-1/2"

⑧ STOREFRONT JAMB @ TUNNEL
ARCH REF: B5/A501
OLDCASTLE 3000 SERIES, CG, SS, 2" X 4-1/2"

REVISIONS	DATE
ORIGINAL ISSUE	09/17/23

--

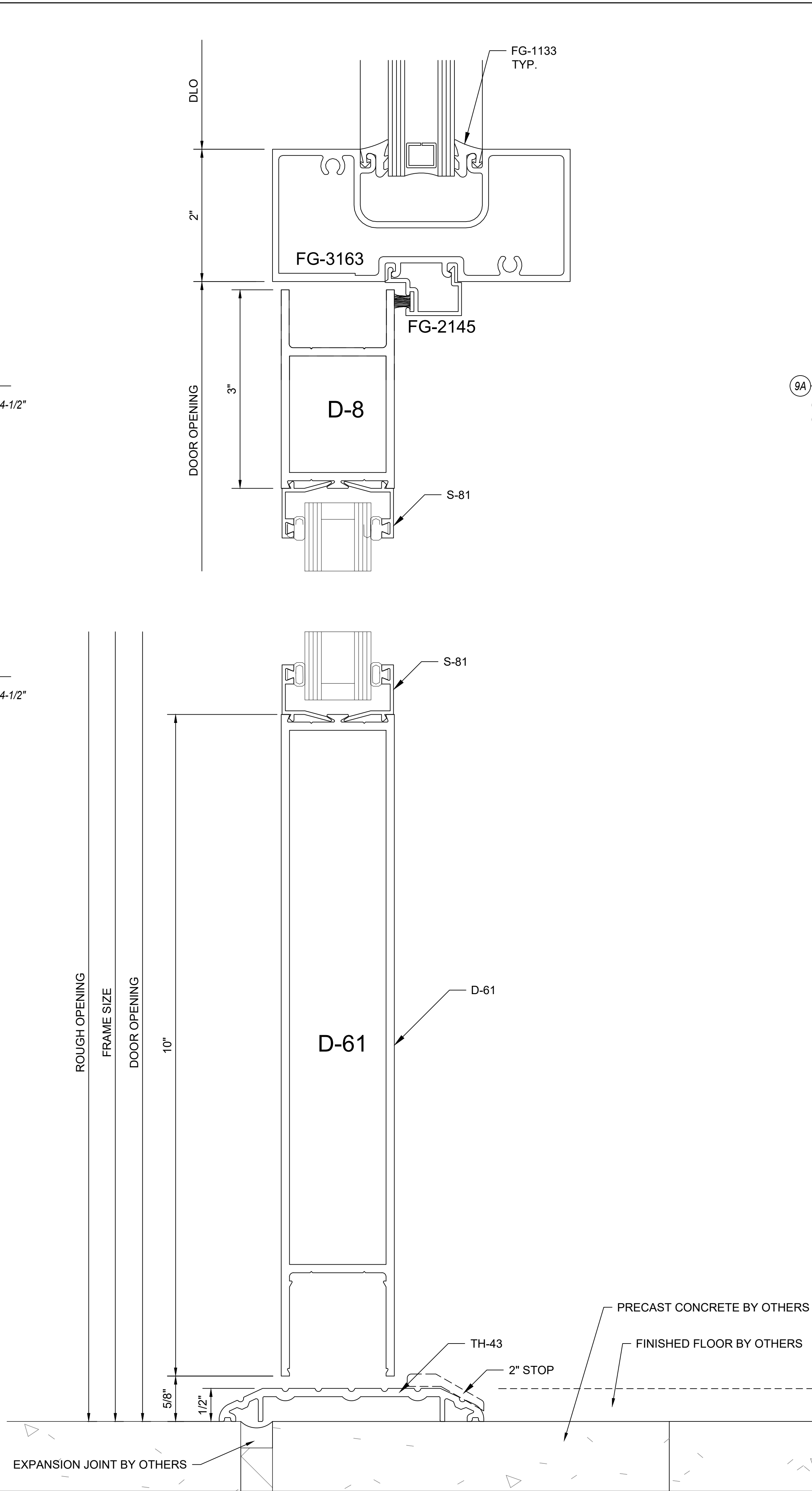
SHINY SHELL CARWASH - KEARNS
4059 WEST 4715 SOUTH
KEARNS, UT 84118

DATE:	X
SCALE:	1:1
DRAWN BY:	E.BARILAR
JOB #:	OCG050

SHEET:

9 STOREFRONT DOOR HEAD
ARCH REF: N/A
OLDCASTLE 3000 SERIES, CG, SS, 2" X 4-1/2"
OLDCASTLE 350 MEDIUM STILE DOOR

10 STOREFRONT DOOR SILL
ARCH REF: B6/A501
OLDCASTLE 3000 SERIES, CG, SS, 2" X 4-1/2"
OLDCASTLE 350 MEDIUM STILE DOOR



9A STOREFRONT DOOR HEAD
ARCH REF: N/A
OLDCASTLE 3000 SERIES, CG, SS, 2" X 4-1/2"
OLDCASTLE 350 MEDIUM STILE DOOR

REVISIONS	DATE
ORIGINAL ISSUE	09/17/23

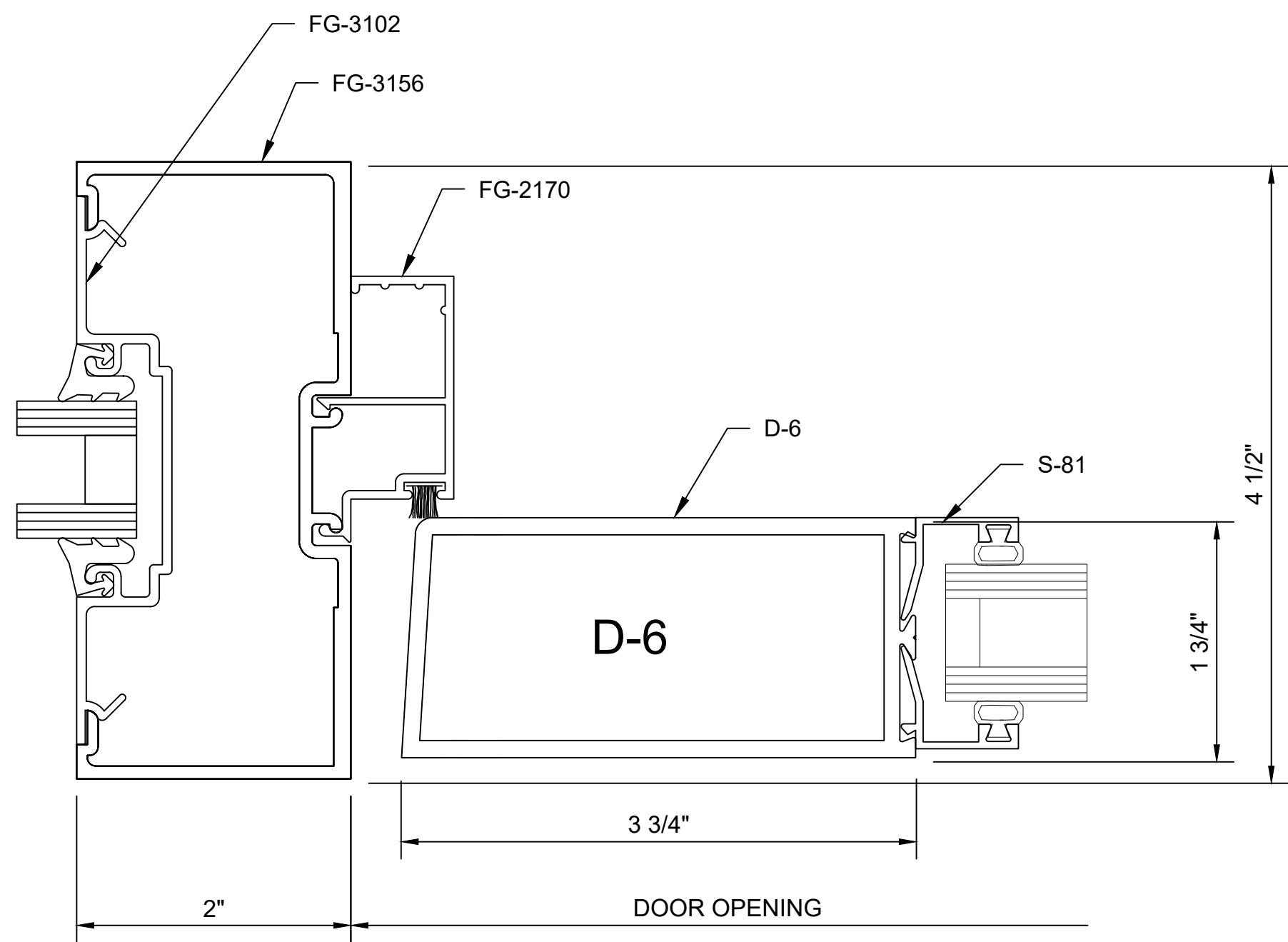
0						
---	--	--	--	--	--	--

SHINY SHELL CARWASH - KEARNS
4059 WEST 4715 SOUTH
KEARNS, UT 84118

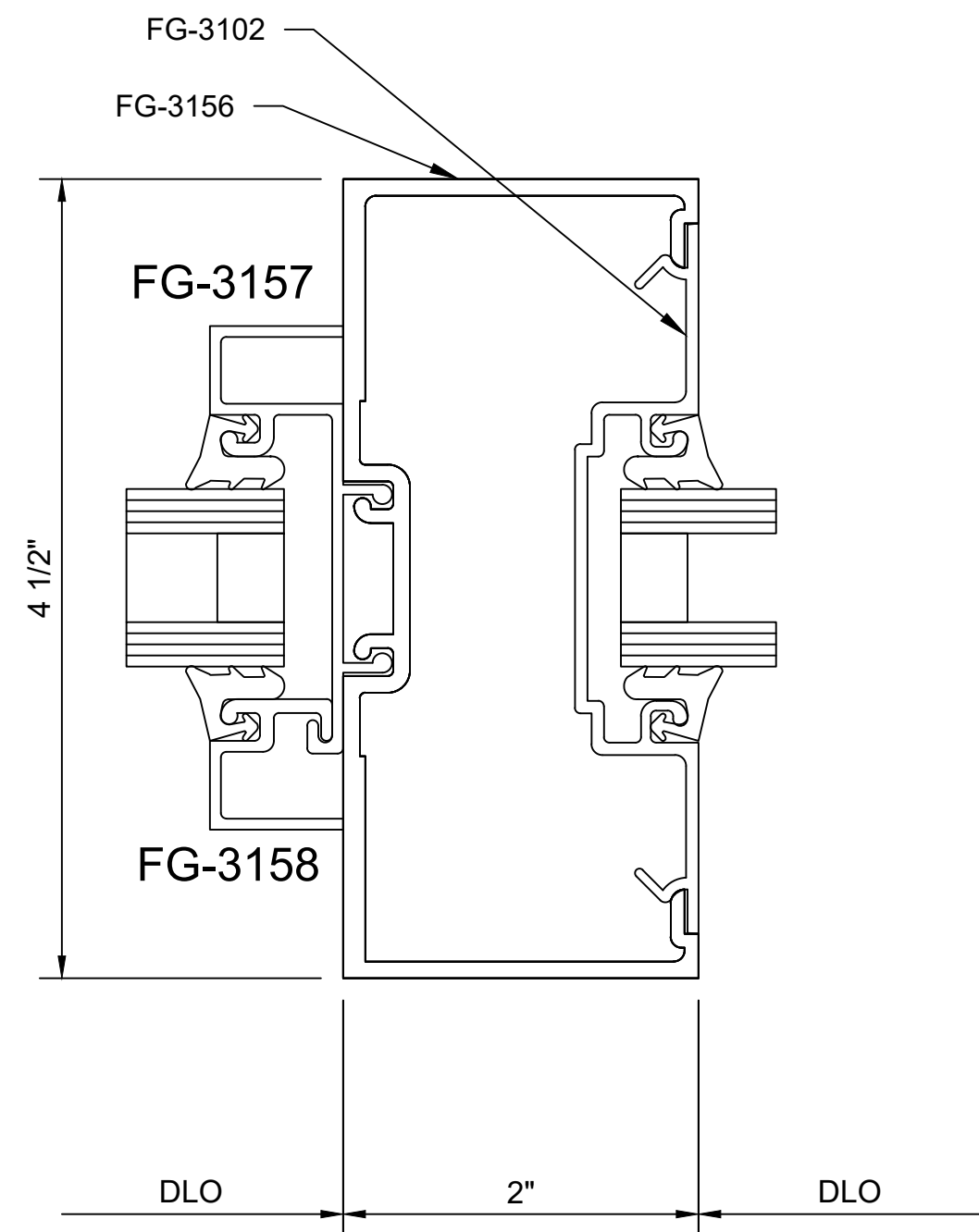
DATE:	X
SCALE:	1:1
DRAWN BY:	E.BARILAR
JOB #:	OCG050

SHEET:

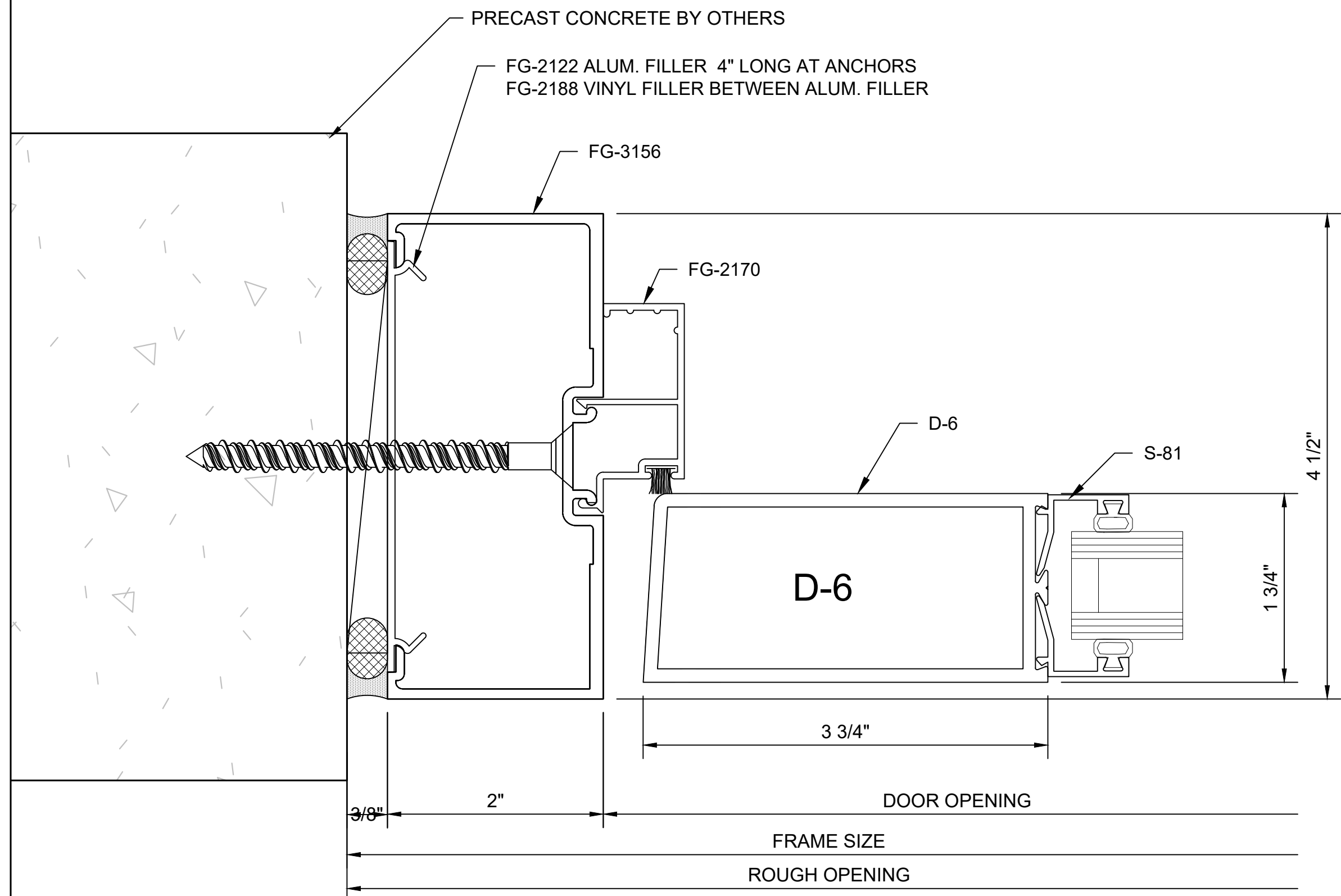
404



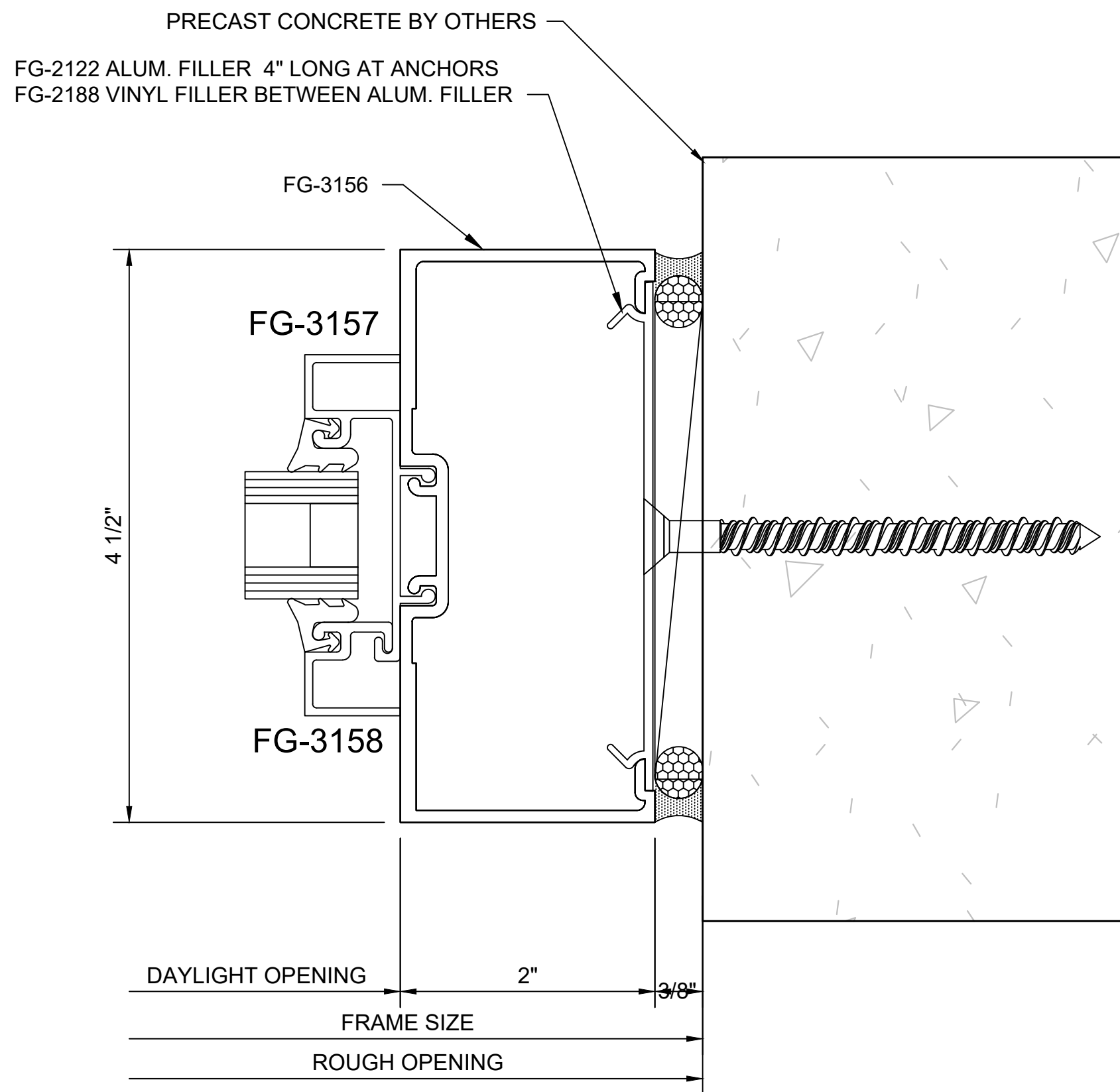
11 STOREFRONT DOOR JAMB @ SIDELITE
ARCH REF: N/A
OLDCASTLE 3000 SERIES, CG, SS, 2" X 4-1/2"
OLDCASTLE 350 MEDIUM STILE DOOR



13 STOREFRONT TRANSOM JAMB @ SIDELITE
ARCH REF: N/A
OLDCASTLE 3000 SERIES, CG, SS, 2" X 4-1/2"
OLDCASTLE 350 MEDIUM STILE DOOR



12 STOREFRONT DOOR JAMB @ WALL
ARCH REF: B5/A501
OLDCASTLE 3000 SERIES, CG, SS, 2" X 4-1/2"
OLDCASTLE 350 MEDIUM STILE DOOR



14 STOREFRONT TRANSOM JAMB @ WALL
ARCH REF: B5/A501
OLDCASTLE 3000 SERIES, CG, SS, 2" X 4-1/2"
OLDCASTLE 350 MEDIUM STILE DOOR

REVISIONS	DATE
ORIGINAL ISSUE	09/17/23

SHINY SHELL CARWASH - KEARNS
4059 WEST 4715 SOUTH
KEARNS, UT 84118

DATE:	X
SCALE:	1:1
DRAWN BY:	E.BARILAR
JOB #:	OCG050

SHEET:

405