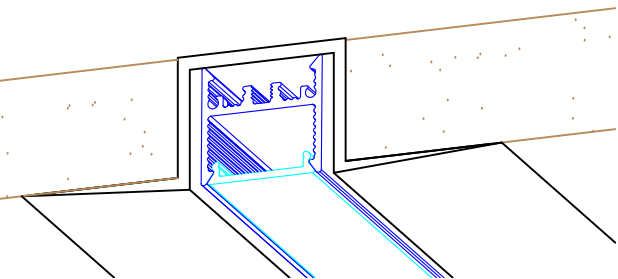


FIXTURE TYPES: K2, K12, K13

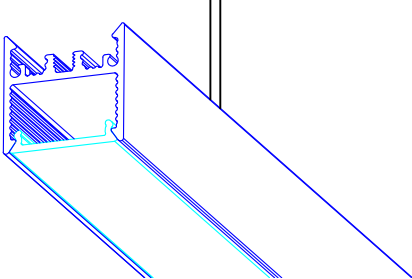
FIXTURE TYPE: KT2_SM20/S20



General Notes:

- SM20LDL luminaires require evenly spaced bracket supports (supplied) 1 meter max. spacing and 2 per extrusion section minimum - note that the extrusion is 0.5 lbs. per foot and requires adequate support from the building structure.
- LEDs, end plates, joint connectors and joint screws supplied
- LED modules pre-installed end to end for continuous illumination.
- Housing provided with 4 ft long, plenum-rated 18/2 cable for connecting to remote Class 2 driver (ordered separately). See layout drawing for power feed location(s). Contractor shall make up wire splices in accessible location.
- This product must be installed in accordance with the applicable installation code by a person familiar with the construction and operation of the product and the hazards involved.
- Consult a qualified electrician to ensure correct branch conductor.
- Do not connect to an ungrounded supply.
- Refer to Whitegoods SM20LDL Installation Instructions for additional installation information.

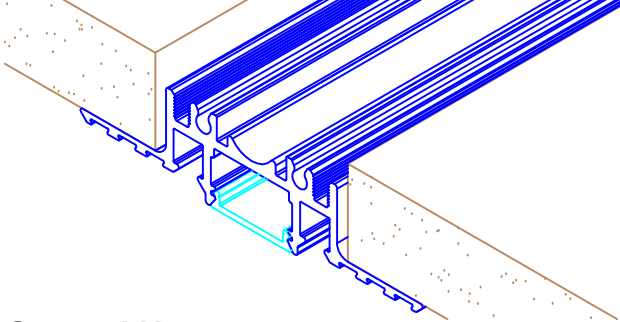
FIXTURE TYPE: KT2_SM20/S20



General Notes:

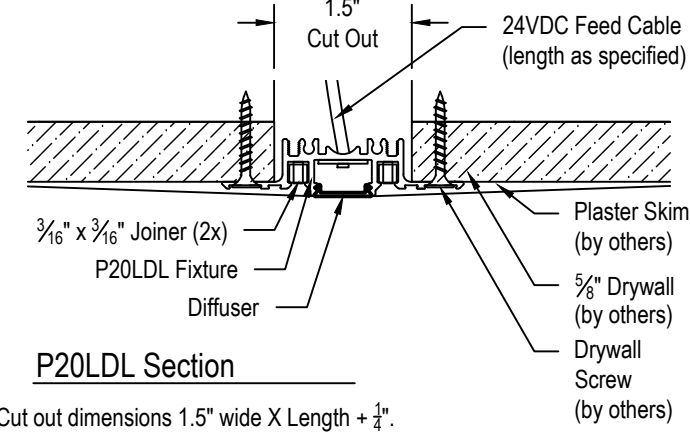
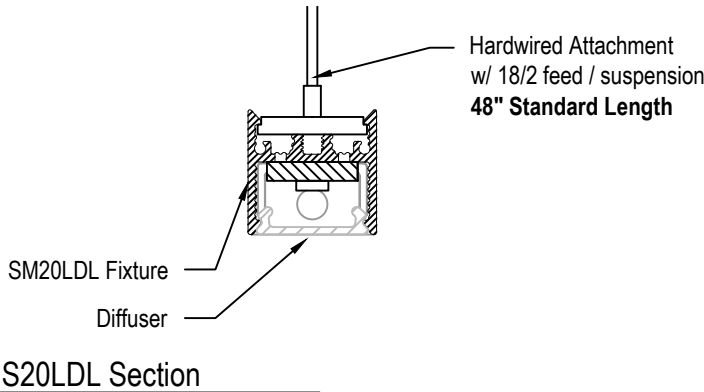
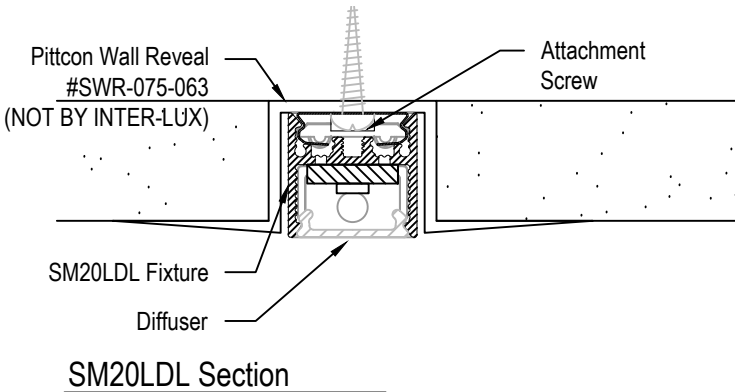
- S20LDL luminaires require evenly spaced power/suspension supports (hardwired) , 2 per extrusion section minimum - note that the extrusion is 0.5 lbs. per foot and requires adequate support from the building structure.
- LEDs, end plates, joint connectors and joint screws supplied
- LED modules pre-installed end to end for continuous illumination.
- Housing provided with 4 ft long, plenum-rated 18/2 cable for connecting to remote Class 2 driver (ordered separately). See layout drawing for power feed location(s). Contractor shall make up wire splices in accessible location.
- This product must be installed in accordance with the applicable installation code by a person familiar with the construction and operation of the product and the hazards involved.
- Consult a qualified electrician to ensure correct branch conductor.
- Do not connect to an ungrounded supply.
- Refer to Whitegoods S20LDL Installation Instructions for additional installation information.

FIXTURE TYPE: KT2_P20



General Notes:

- P20LDL luminaires require evenly spaced bracket supports (supplied) 1 meter max. spacing and 2 per extrusion section minimum - note that the extrusion is 0.5 lbs. per foot and requires adequate support from the building structure.
- Joint connectors and joint screws supplied as required for each system.
- End plates pre-installed..
- LED modules pre-installed end to end for continuous illumination.
- Housing provided with plenum-rated 18/2 cable for connecting to remote Class 2 driver (ordered separately). See layout drawing for power feed location(s). Contractor shall make up wire splices in accessible location.
- This product must be installed in accordance with the applicable installation code by a person familiar with the construction and operation of the product and the hazards involved.
- Consult a qualified electrician to ensure correct branch conductor.
- Do not connect to an ungrounded supply.
- Refer to Whitegoods P20LDL Installation Instructions for additional installation information.



Notes / Stamps:

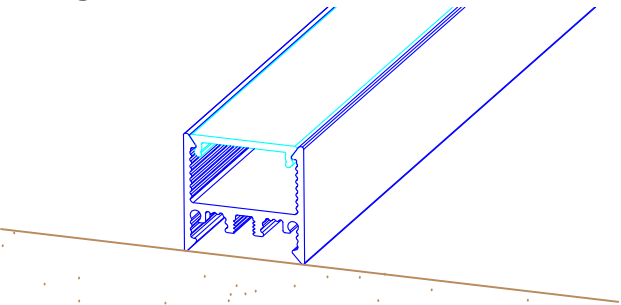
RECORD
 01/16/2018
12:42:43 PM

20LDL	REVISIONS				DATE				
	REVISIONS				DATE				
					#				
					</				

DULLES DISCOVERY 4 TENANT

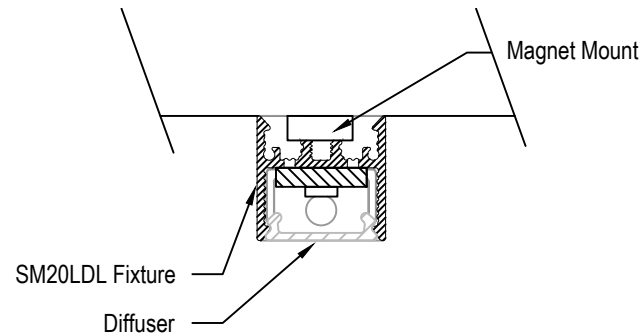
SO# 22194
FIXTURE TYPES: K2, K12, K13

FIXTURE TYPE: KT12



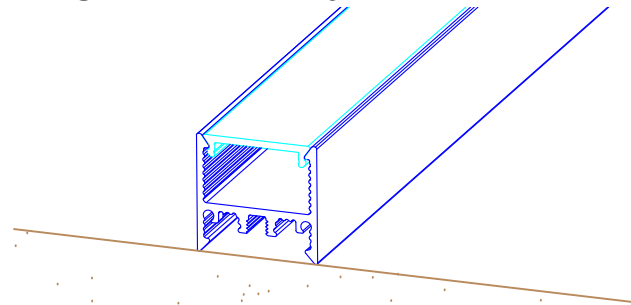
General Notes:

1. SM20LDL luminaires pre-assembled with magnet mounting - note that the extrusion is 0.5 lbs. per foot and requires adequate support from the building structure.
2. LEDs, end plates, joint connectors and joint screws supplied
3. LED modules pre-installed end to end for continuous illumination.
4. Housing provided with 4 ft long, plenum-rated 18/2 cable for connecting to remote Class 2 driver (ordered separately). See layout drawing for power feed location(s). Contractor shall make up wire splices in accessible location.
5. This product must be installed in accordance with the applicable installation code by a person familiar with the construction and operation of the product and the hazards involved.
6. Consult a qualified electrician to ensure correct branch conductor.
7. Do not connect to an ungrounded supply.
8. Refer to Whitegoods SM20LDL Installation Instructions for additional installation information.



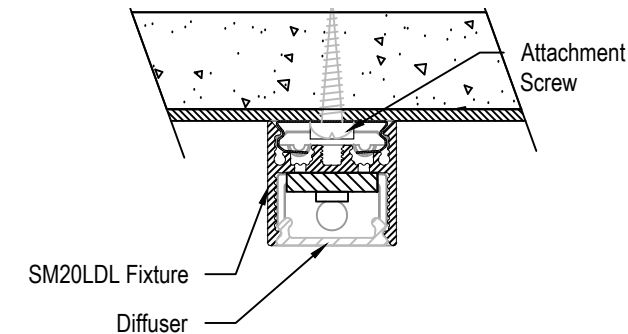
SM20LDL Section (MAGNET MOUNTING)

FIXTURE TYPE: KT13



General Notes:

1. SM20LDL luminaires require evenly spaced bracket supports (supplied) 1 meter max. spacing and 2 per extrusion section minimum - note that the extrusion is 0.5 lbs. per foot and requires adequate support from the building structure.
2. LEDs, end plates, joint connectors and joint screws supplied
3. LED modules pre-installed end to end for continuous illumination.
4. Housing provided with 4 ft long, plenum-rated 18/2 cable for connecting to remote Class 2 driver (ordered separately). See layout drawing for power feed location(s). Contractor shall make up wire splices in accessible location.
5. This product must be installed in accordance with the applicable installation code by a person familiar with the construction and operation of the product and the hazards involved.
6. Consult a qualified electrician to ensure correct branch conductor.
7. Do not connect to an ungrounded supply.
8. Refer to Whitegoods SM20LDL Installation Instructions for additional installation information.



SM20LDL Section

Notes / Stamps:

RECORD
01/16/2018
12:42:36 PM

20LDL

REVISIONS	DATE	
	DATE	
#		

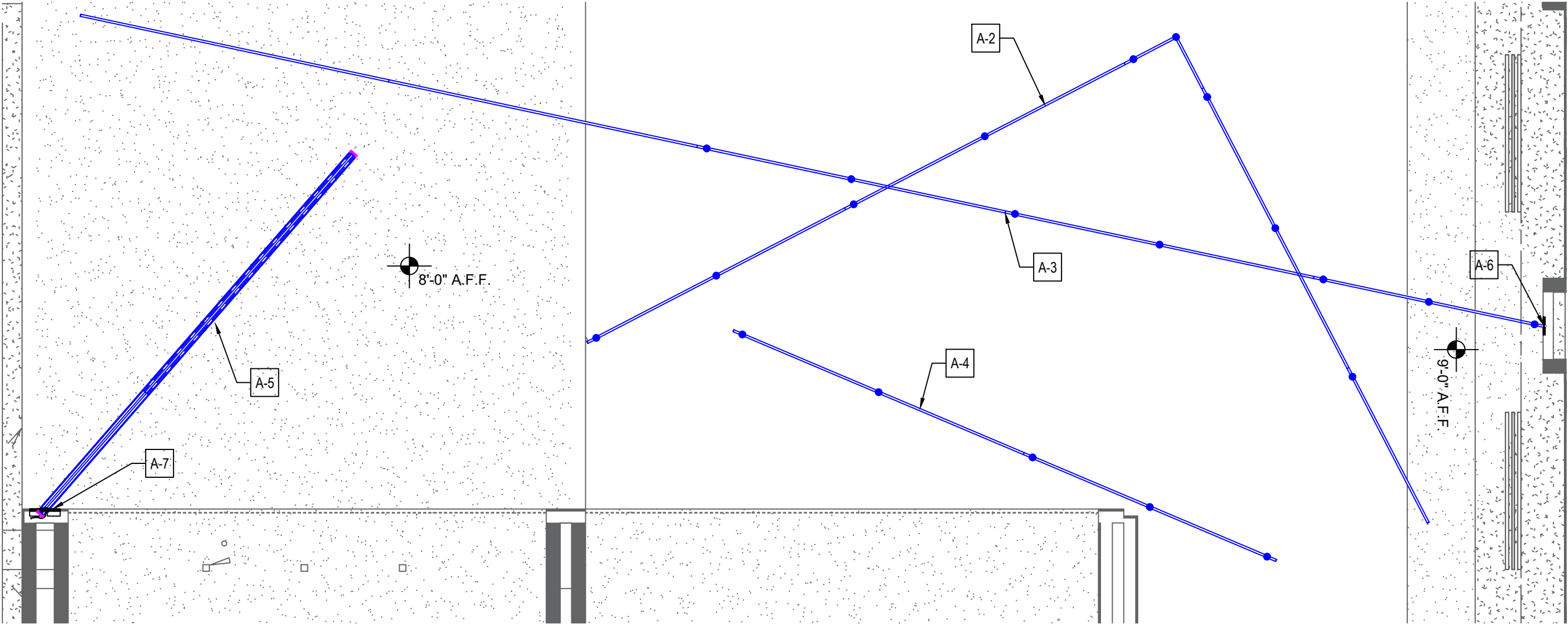
RECORD DRAWING

DRAWN: E.BARILAR
AREA: N/A
TYPE: K2, K12, K13
SHEET: C-2

FIXTURE SUMMARY

RECORD
 01/16/2018
12:42:28 PM

REVISIONS	DATE



SHEET	QTY	CATALOG NUMBER	FIXTURE TYPE
A-2	1	WG-S20LDL-P-16'10.875"x13'11.75"-L-835-UNV-DES-OD-C4-MODSM	KT2_SM/S20LDL
A-3	1	WG-S20LDL-S-38'1"-L-835-UNV-DES-OD-C4-MODSM	KT2_SM/S20LDL
A-4	1	WG-S20LDL-S-15'0"-L-835-UNV-DES-OD-S48	KT2_S20LDL
A-5	1	WG-P20LDL-S-12'1"-L-835-UNV-DES-OD-P-C4	KT2_P20LDL
A-6	1	WG-SM20LDL-S-7'0"-L-835-UNV-DES-OD-SC-C4	KT2_SM/S20LDL
A-7	1	WG-P20LDL-S-3'0"-L-835-UNV-DES-OD-P-C4	KT2_P20LDL
A-8	2	WG-SM20LDL-S-8'0"-L-835-UNV-X-OD-MM-C4	KT12
A-9	1	WG-SM20LDL-S-13'0"-L-835-UNV-X-OD-MM-C4	KT12
A-10	78	WG-SM20LDL-PZ-2'0"x4'0"-L-835-UNV-X-OD-SC-C4-MODAA	KT13
A-11	10	WG-SM20LDL-PZ-2'0"x1'0"-L-835-UNV-X-OD-SC-C4-MODAA	KT13
A-12	3	WG-SM20LDL-S-6'0"-L-835-UNV-X-OD-SC-C4-MODAA	KT13
A-13	2	WG-SM20LDL-PZ-3'0"x3'0"-L-835-UNV-X-OD-SC-C4-MODAA	KT13
A-14	13	WG-SM20LDL-PZ-2'0"x3'0"-L-835-UNV-X-OD-SC-C4-MODAA	KT13

REFLECTED CEILING VIEW

RECORD DRAWING

DRAWN:	E.BARILAR
AREA:	N/A
TYPE:	KT2 (ALL)
SHEET:	A-1

Bill of Material (quantities per area)

QTY	CATALOG NUMBER
1	WG-S20LDL-P-16*10.875*x13*11.75"-L-835-UNV-DES-OD-C4-MODSM

consisting of:

ID	QTY	PART NUMBER
A	2	S20LDL-S-96250-L-835-OD-2SC48
B	1	S20LDL-S-88575-L-835-OD-2SC48
C	1	S20LDL-S-53200-L-835-OD-2SC48
D	1	S20LDL-C90-18000-L-835-OD-2SC48

Remote Power Supply	
(4)	IL-JB-LED-24010-DES Junction Box with Integral Lutron Driver, 1%, EcoSystem dimming, 24VDC, 120-277V, Case K, supplied in a dry location enclosure.

*DRIVER QUANTITY PER FIXTURES IN EACH AREA

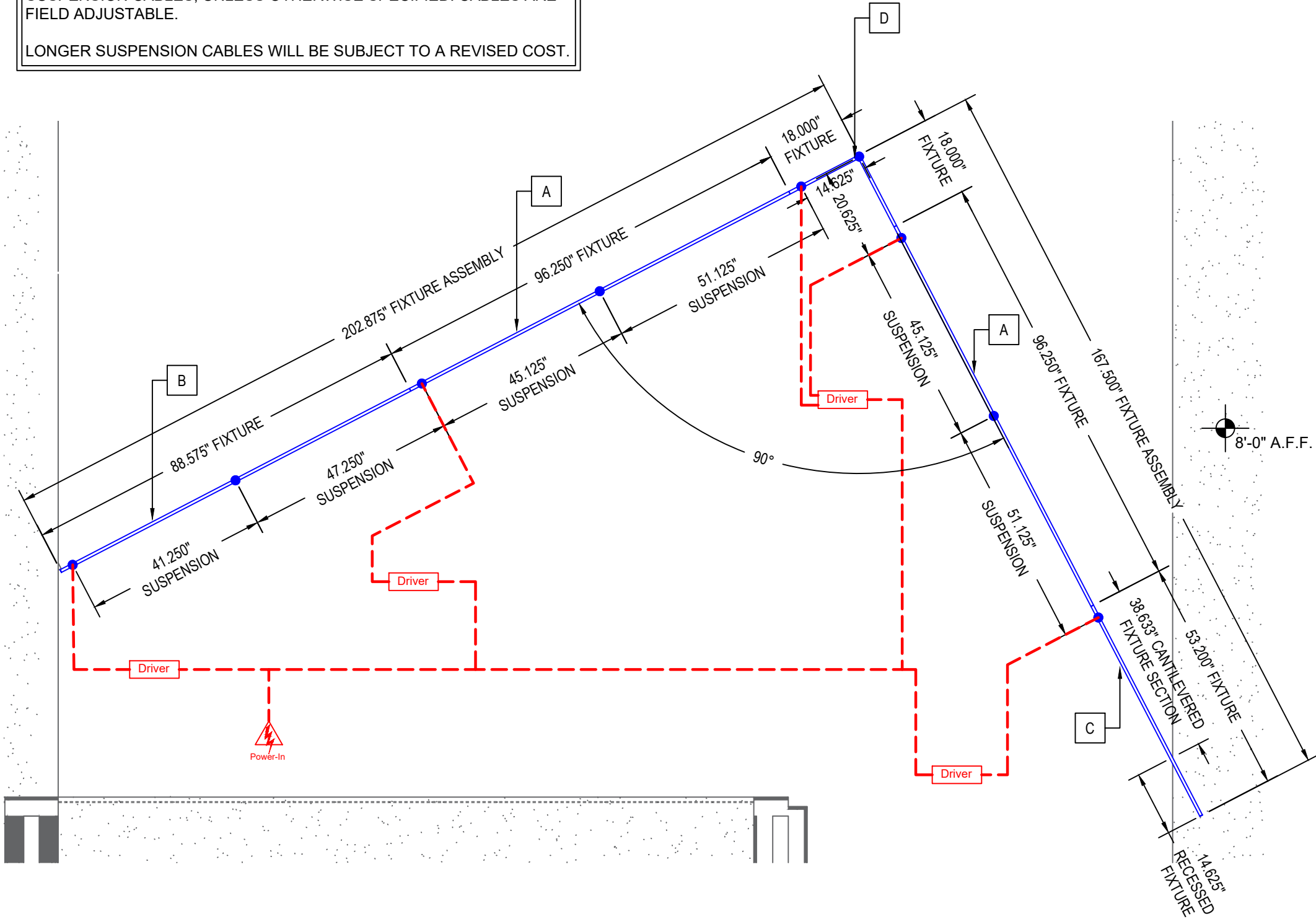
NOTE:
HARDWIRED SUSPENSION / POWER
FEED CABLE AT SUSPENDED
LOCATIONS TO BE 4'.

ALL SUSPENDED FIXTURES WILL BE PRODUCED WITH 48" POWER /
SUSPENSION CABLES, UNLESS OTHERWISE SPECIFIED. CABLES ARE
FIELD ADJUSTABLE.

LONGER SUSPENSION CABLES WILL BE SUBJECT TO A REVISED COST.

RECORD
01/16/2018
12:42:25 PM

DATE	DATE				
REVISIONS	REVISIONS				
1					
2					
3					
4					



REFLECTED CEILING VIEW

RECORD DRAWING

DRAWN:	E.BARILAR
AREA:	2
TYPE:	KT2_SM/S20LDL
SHEET:	

Bill of Material *(quantities per area)*

QTY	CATALOG NUMBER	
1	WG-S20LDL-S-38'1"-L-835-UNV-DES-OD-C4-MODSM	
consisting of:		
ID	QTY	PART NUMBER
A	2	S20LDL-S-96000-L-835-OD-2SC48
B	1	S20LDL-S-71900-L-835-OD-2SC48
C	2	SM20LDL-S-96250-L-835-OD-C4

Remote Power Supply

(5)	IL-JB-LED-24010-DES	Junction Box with Integral Lutron Driver, 1%, EcoSystem dimming, 24VDC, 120-277V, Case K, supplied in a dry location enclosure.
-----	---------------------	---

*DRIVER QUANTITY PER FIXTURES IN EACH AREA

NOTE:
HARDWIRED FEED CABLE AT RECESSED LOCATIONS TO BE 4' STANDARD.

HARDWIRED SUSPENSION / POWER FEED CABLE AT SUSPENDED LOCATIONS TO BE 4'.

ALL SUSPENDED FIXTURES WILL BE PRODUCED WITH 48" POWER / SUSPENSION CABLES, UNLESS OTHERWISE SPECIFIED. CABLES ARE FIELD ADJUSTABLE.

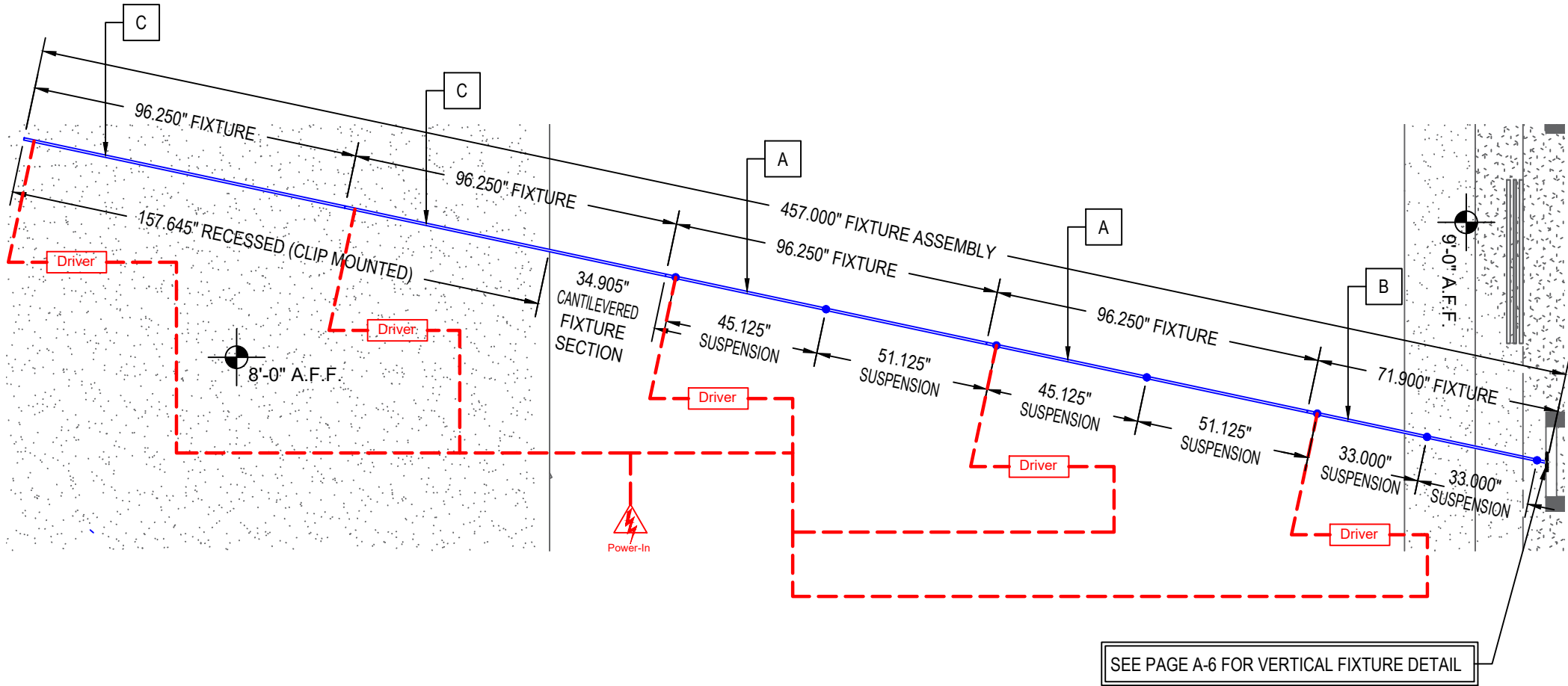
LONGER SUSPENSION CABLES WILL BE SUBJECT TO A REVISED COST.

RECORD

01/16/2018

12:42:28 PM

DATE	DATE				
REVISIONS	REVISIONS				



RECORD DRAWING

REFLECTED CEILING VIEW

DRAWN:	E.BARILAR
AREA:	3
TYPE:	KT2_SM/S20LDL
SHEET:	A-3

Bill of Material <i>(quantities per area)</i>		
QTY	CATALOG NUMBER	
1	WG-S20LDL-S-15'0"-L-835-UNV-DES-OD-S48	
consisting of:		
ID	QTY	PART NUMBER
A	1	S20LDL-S-96000-L-835-OD-2SC48
B	1	S20LDL-S-83650-L-835-OD-2SC48
Remote Power Supply		
(2)	IL-JB-LED-24010-DES	Junction Box with Integral Lutron Driver, 1%, EcoSystem dimming, 24VDC, 120-277V, Case K, supplied in a dry location enclosure.

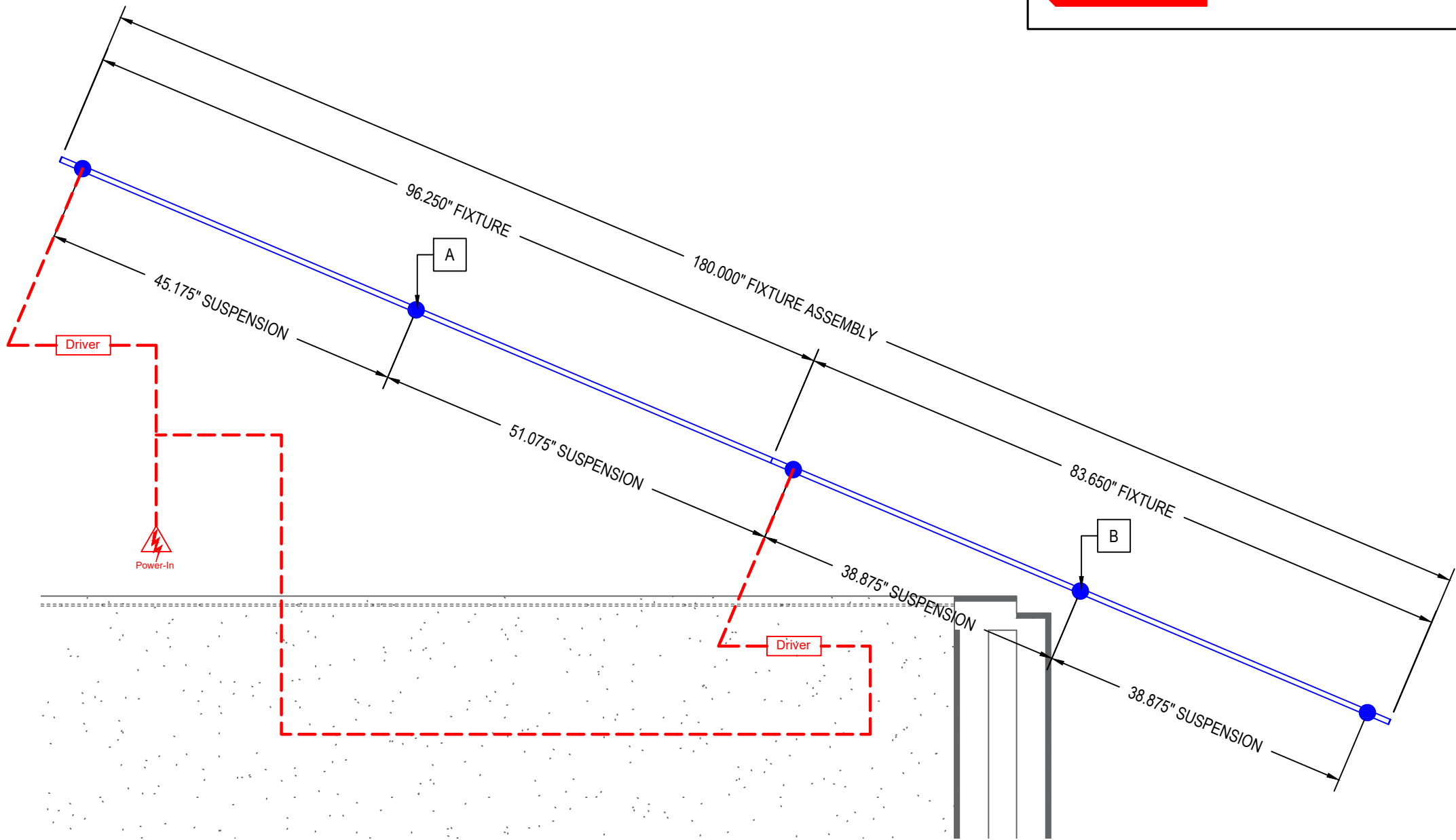
*DRIVER QUANTITY PER FIXTURES IN EACH AREA

RECORD

01/16/2018

12:42:16 PM

REVISIONS	DATE	REVISIONS	DATE			



RECORD DRAWING

REFLECTED CEILING VIEW

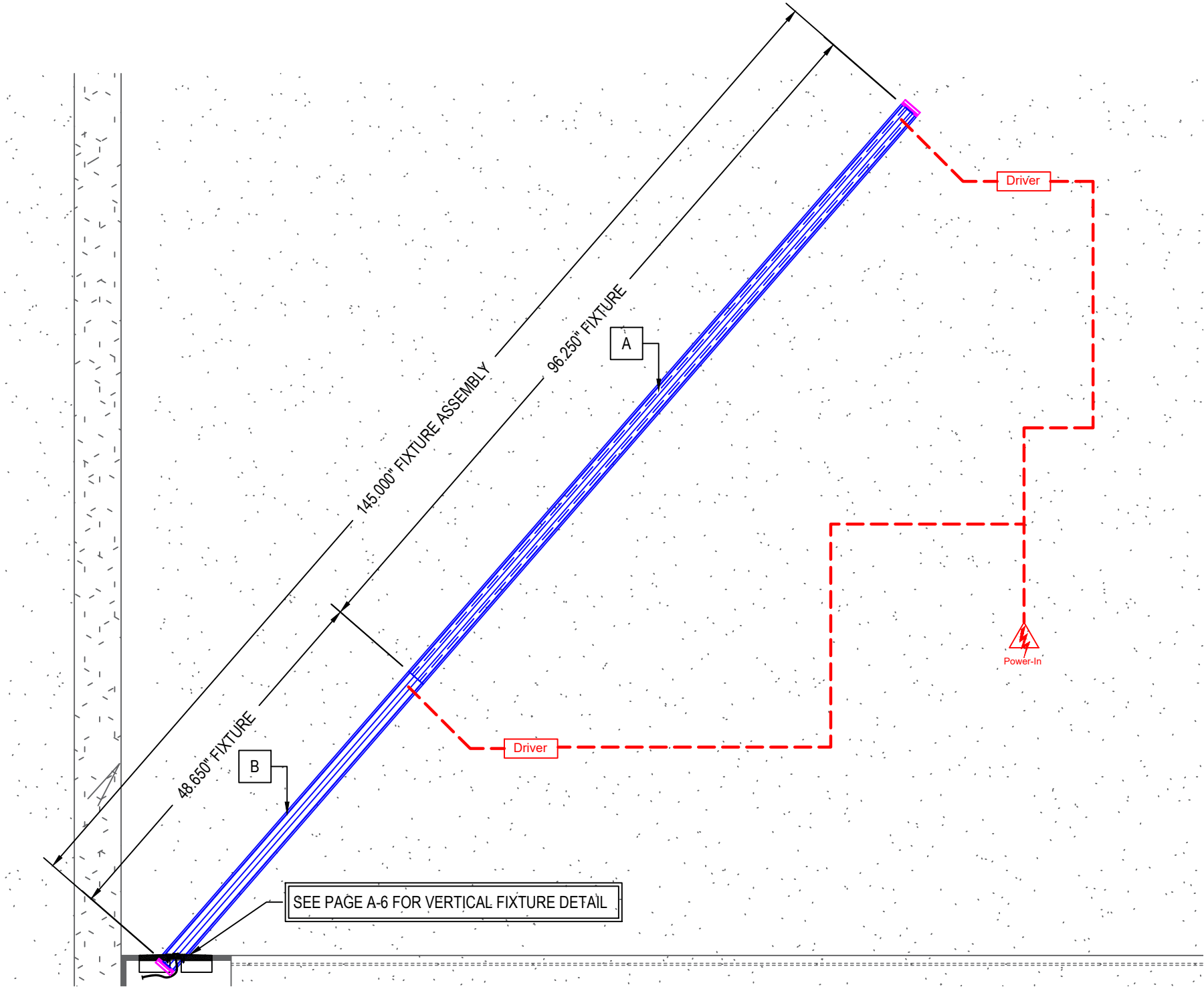
DRAWN:	E.BARILAR
AREA:	4
TYPE:	KT2_S20LDL
SHEET:	A-4

Bill of Material <i>(quantities per area)</i>		
QTY	CATALOG NUMBER	
1	WG-P20LDL-S-12'1"-L-835-UNV-DES-OD-P-C4	
consisting of:		
ID	QTY	PART NUMBER
A	1	P20LDL-S-96250-L-835-OD-C4
B	1	P20LDL-S-48650-L-835-OD-C4
Remote Power Supply		
(2)	IL-JB-LED-24010-DES	Junction Box with Integral Lutron Driver, 1%, EcoSystem dimming, 24VDC, 120-277V, Case K, supplied in a dry location enclosure.

*DRIVER QUANTITY PER FIXTURES IN EACH AREA

RECORD
01/16/2018
12:42:15 PM

DATE	DATE				
REVISIONS	REVISIONS				



RECORD DRAWING

DRAWN:	E.BARILAR
AREA:	5
TYPE:	KT2_P20LDL
SHEET:	A-5

REFLECTED CEILING VIEW

Bill of Material *(quantities per area)*

QTY	CATALOG NUMBER
1	WG-SM20LDL-S-7'0"-L-835-UNV-DES-OD-SC-C4

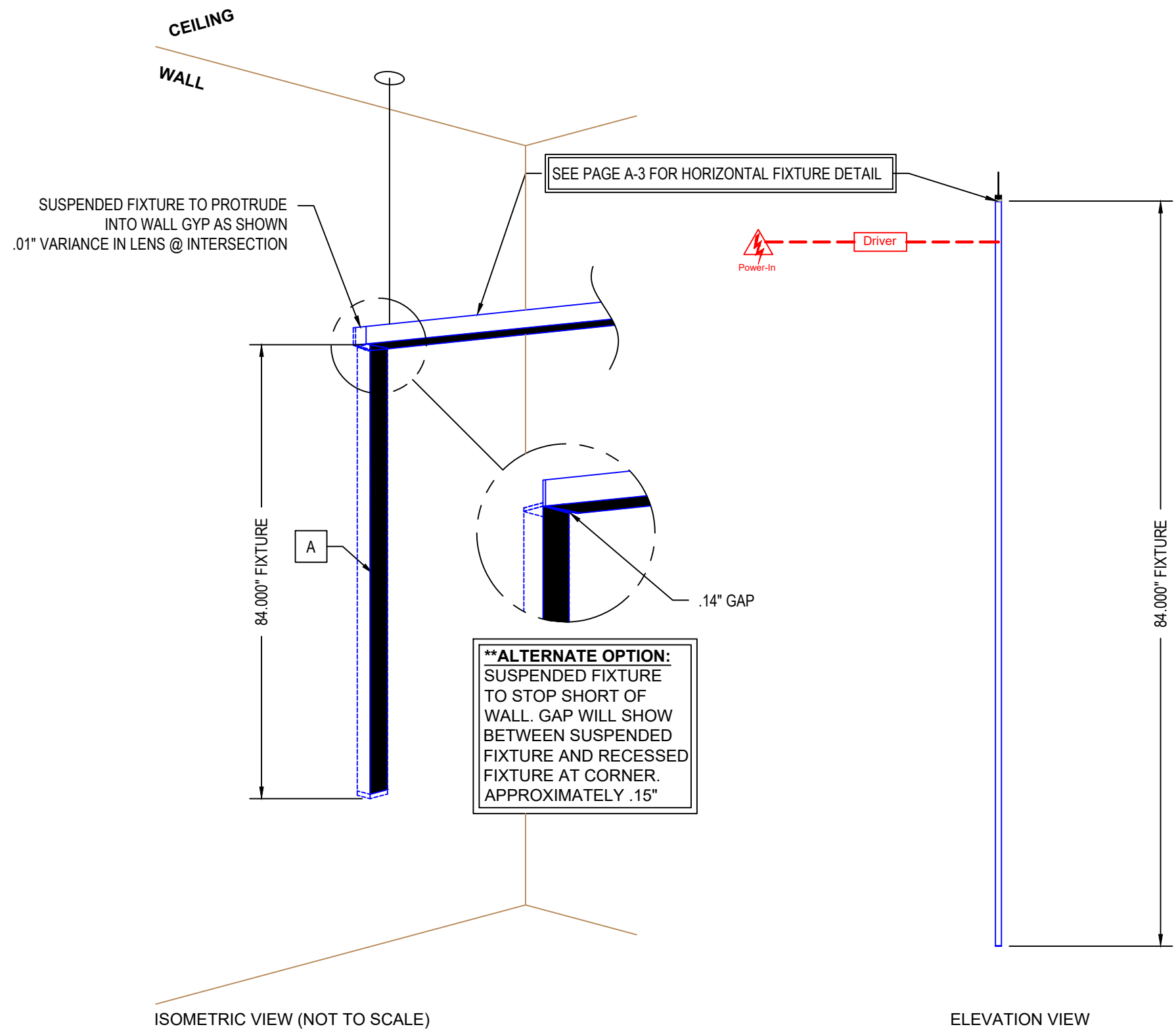
consisting of:

ID	QTY	PART NUMBER
A	1	SM20LDL-S-83950-L-835-OD-C4

Remote Power Supply

(1)	IL-JB-LED-24010-DES Junction Box with Integral Lutron Driver, 1%, EcoSystem dimming, 24VDC, 120-277V, Case K, supplied in a dry location enclosure.
-----	---

***DRIVER QUANTITY PER FIXTURES IN EACH AREA**



RECORD DRAWING

#	REVISIONS	DATE
#	REVISIONS	DATE

DRAWN: E.BARILAR

AREA: 6

TYPE: KT2_SM20LDL

SHEET:

A-6

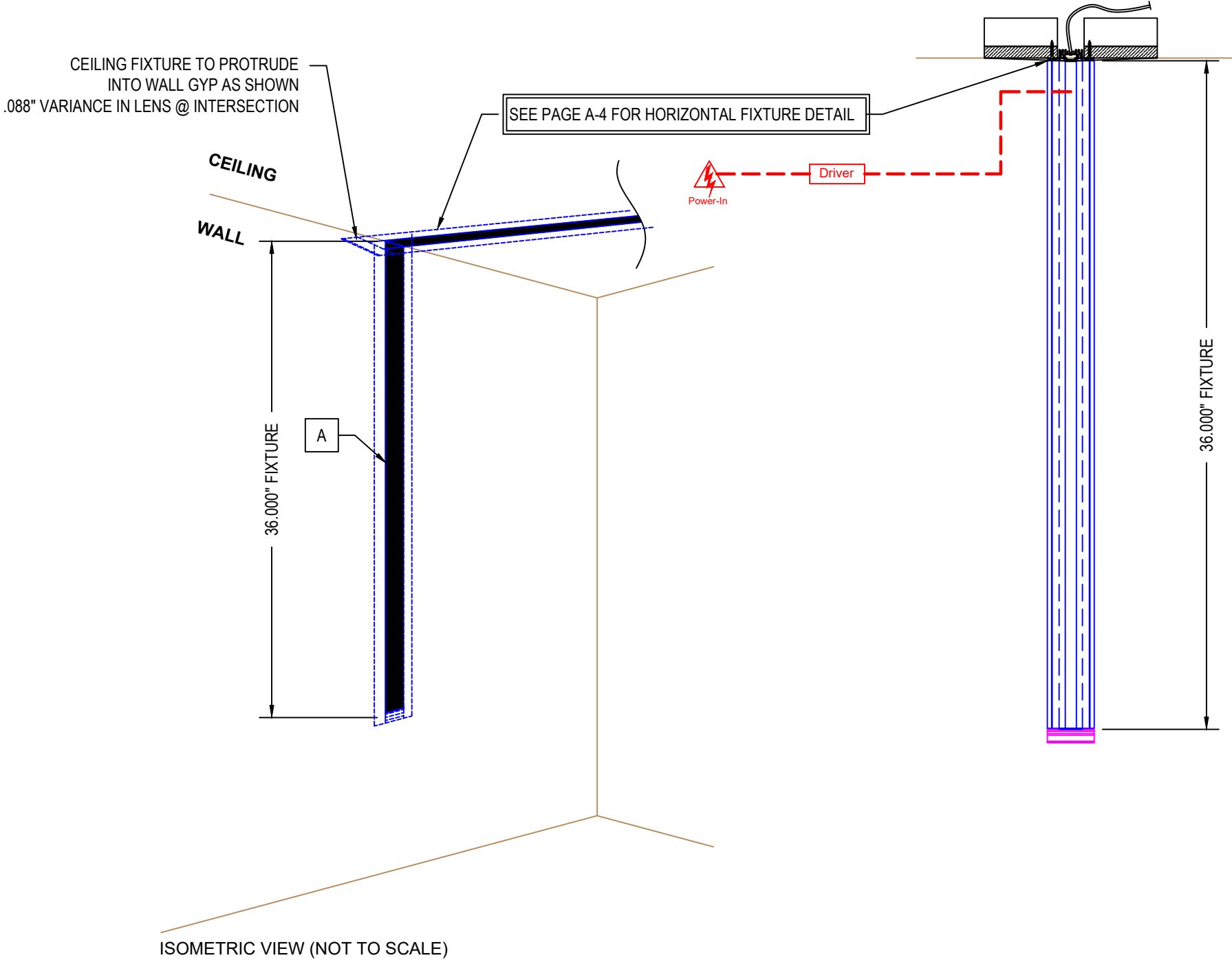
Bill of Material *(quantities per area)*

QTY	CATALOG NUMBER
1	WG-P20LDL-S-3'0"-L-835-UNV-DES-OD-P-C4

consisting of:		
ID	QTY	PART NUMBER
A	1	P20LDL-S-35950-L-835-OD-C4

Remote Power Supply		
(2)	IL-JB-LED-24010-DES	Junction Box with Integral Lutron Driver, 1%, EcoSystem dimming, 24VDC, 120-277V, Case K, supplied in a dry location enclosure.

*DRIVER QUANTITY PER FIXTURES IN EACH AREA



RECORD
01/16/2018
12:42:07 PM

REVISIONS	DATE

DRAWN: E.BARILAR
AREA: 7
TYPE: KT2_P20LDL
SHEET: A-7

Bill of Material *(quantities per area)*

QTY	CATALOG NUMBER
2	WG-SM20LDL-S-8'0"-L-835-UNV-X-OD-MM-C4

consisting of:

ID	QTY	PART NUMBER
A	1	SM20LDL-S-95900-L-835-OD-C4-SA

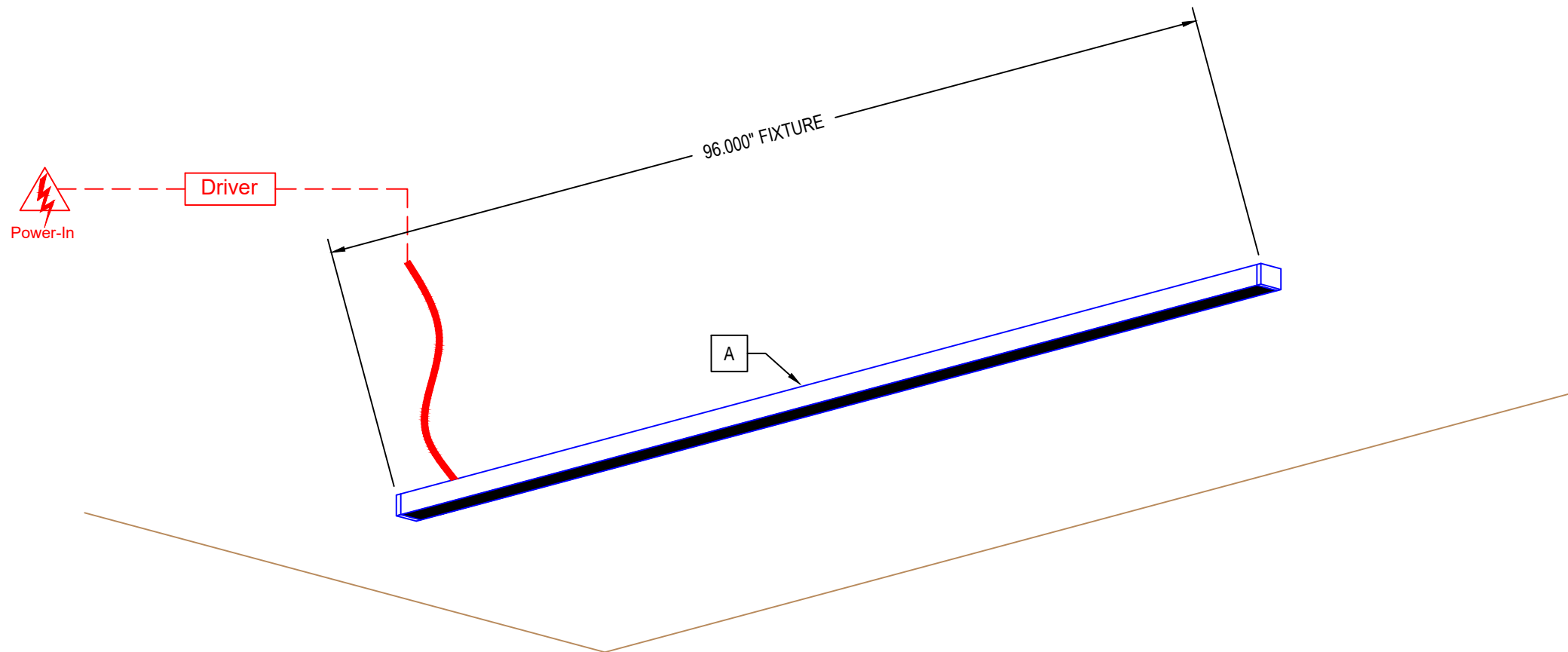
Remote Power Supply

(2)	IL-JB12-LED-24006-UNV-D010	Osram 10%, 0-10V Dimming 96W, 24VDC, 120-277V
-----	----------------------------	--

(2) 8'-0" SYSTEMS (MAX) MAY BE POWERED PER DRIVER
(1) DRIVERS ALLOCATED FOR THESE SYSTEMS

RECORD
01/16/2018

#	REVISIONS	DATE
A	REVISIONS	DATE



RECORD DRAWING

DRAWN: E.BARILAR

AREA: 8

TYPE: KT12

SHEET:

A-8

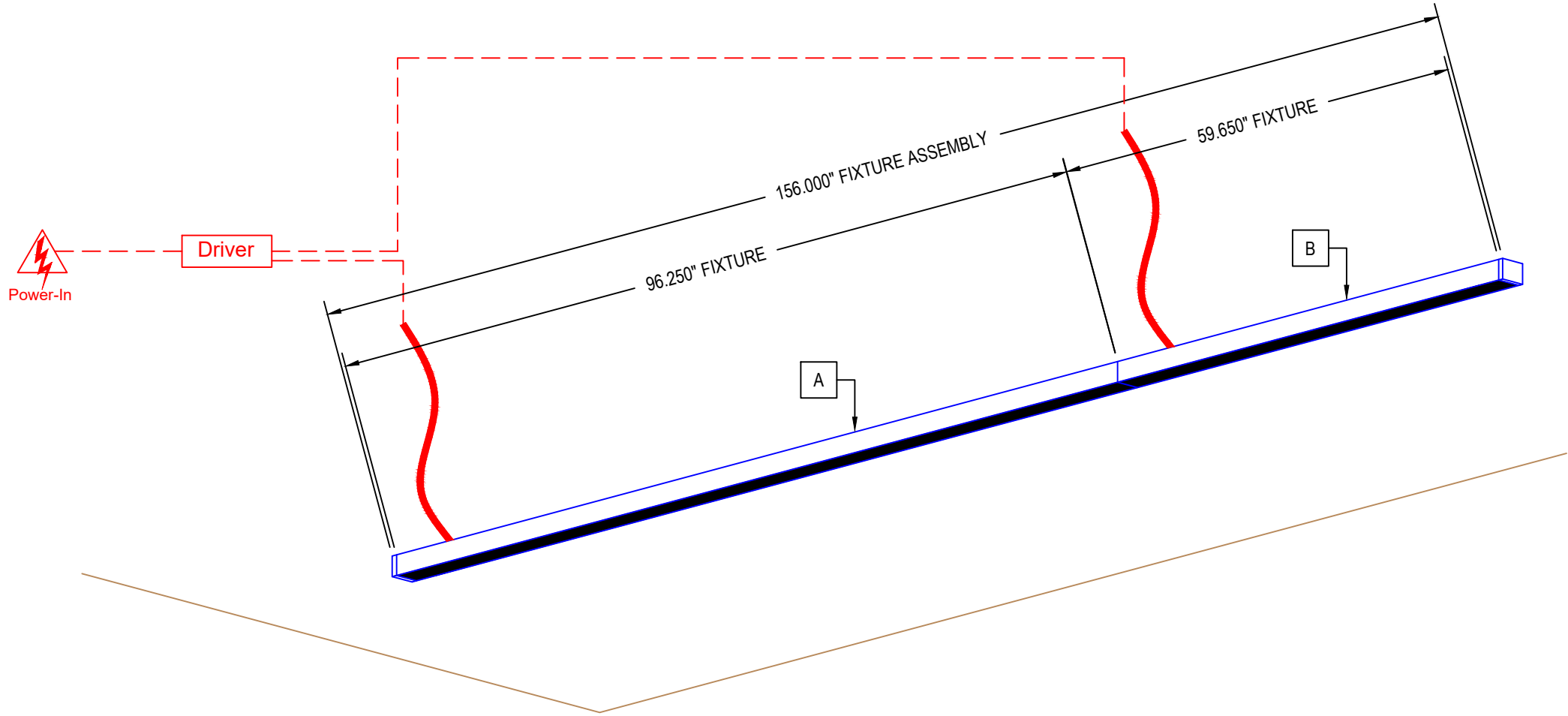
Bill of Material <i>(quantities per area)</i>		
QTY	CATALOG NUMBER	
1	WG-SM20LDL-S-13'0"-L-835-UNV-X-OD-MM-C4	
consisting of:		
ID	QTY	PART NUMBER
A	1	SM20LDL-S-96250-L-835-OD-C4
B	1	SM20LDL-S-59650-L-835-OD-C4

RECORD

01/16/2018

12:42:00 PM

DATE	DATE				
REVISIONS	REVISIONS				



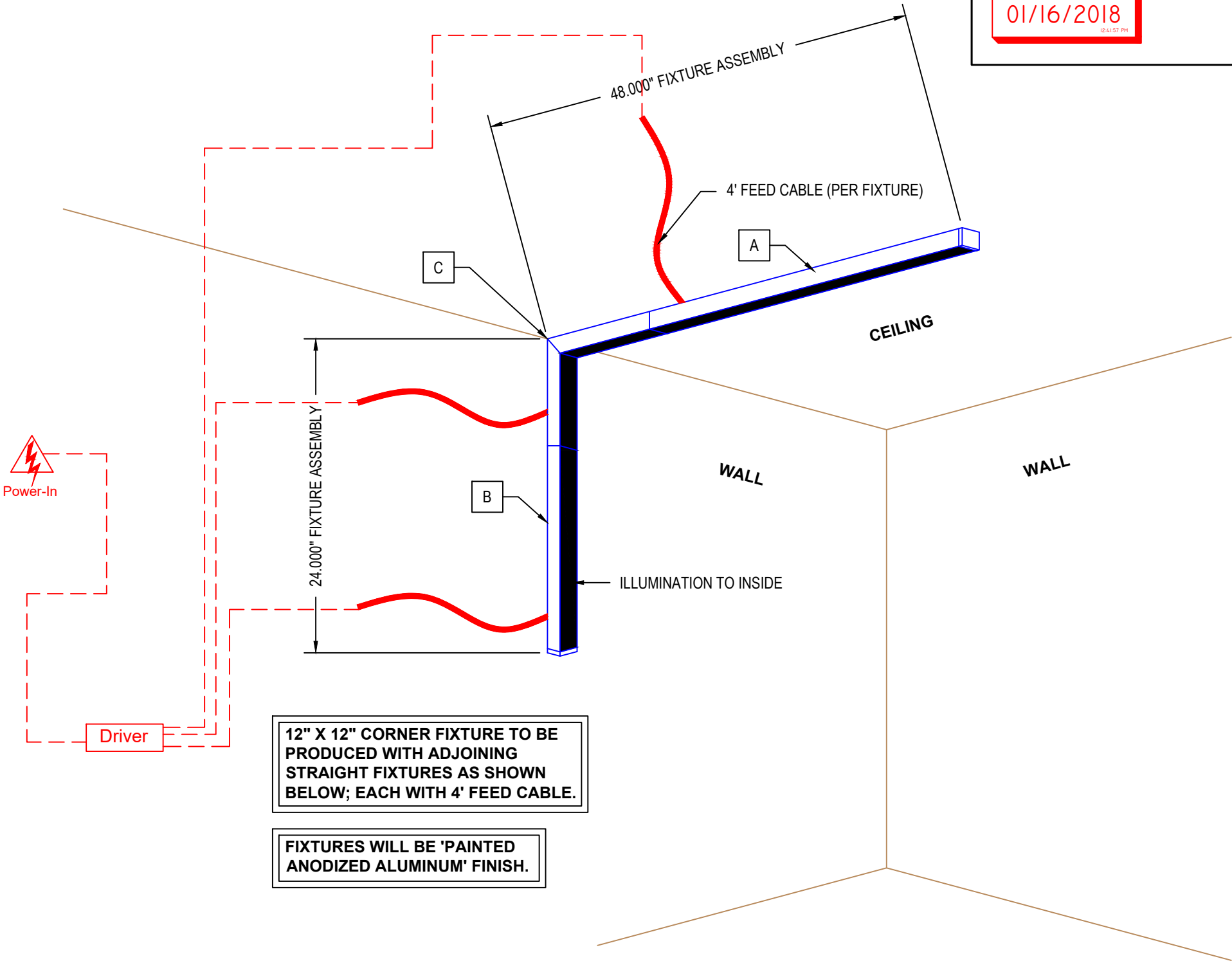
RECORD DRAWING

DRAWN:	E.BARILAR
AREA:	9
TYPE:	KT12
SHEET:	A-9

Bill of Material *(quantities per area)*

QTY	CATALOG NUMBER	
78	WG-SM20LDL-PZ-2'0"x4'0"-L-835-UNV-X-OD-SC-C4-MODAA	
consisting of:		
ID	QTY	PART NUMBER
A	1	SM20LDL-S-35950-L-835-OD-C4
B	1	SM20LDL-S-11950-L-835-OD-C4
C	1	SM20LDL-IC90-12000-L-835-OD-C4

Remote Power Supply		
(20)	IL-JB12-LED-24006-UNV-D010	Osram 10%, 0-10V Dimming 96W, 24VDC, 120-277V
(4) 2'-0"x 4'-0" SYSTEMS (MAX) MAY BE POWERED PER DRIVER		
(20) DRIVERS ALLOCATED FOR THESE SYSTEMS		



RECORD
01/16/2018
12:41:57 PM

DATE	DATE				
REVISIONS	REVISIONS				

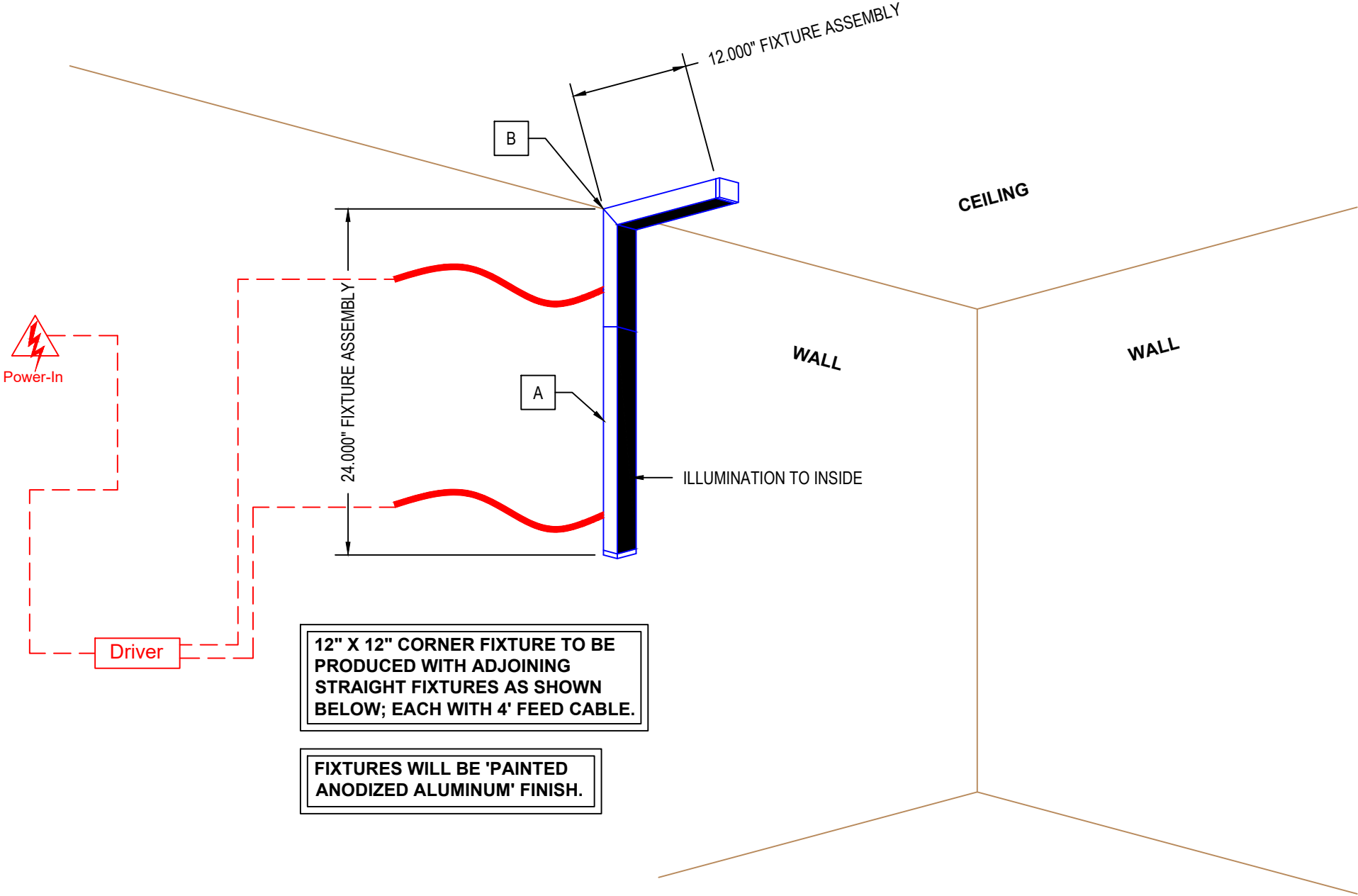
RECORD DRAWING

DRAWN: E.BARILAR
AREA: 10
TYPE: KT13
SHEET: A-10

Bill of Material *(quantities per area)*

QTY	CATALOG NUMBER	
10	WG-SM20LDL-PZ-2'0"x1'0"-L-835-UNV-X-OD-SC-C4-MODAA	
consisting of:		
ID	QTY	PART NUMBER
A	1	SM20LDL-S-11950-L-835-OD-C4
B	1	SM20LDL-IC90-12000-L-835-OD-C4

Remote Power Supply		
(2)	IL-JB12-LED-24006-UNV-D010	Osram 10%, 0-10V Dimming 96W, 24VDC, 120-277V
(8) 2'-0"x 1'-0" SYSTEMS (MAX) MAY BE POWERED PER DRIVER		
(2) DRIVERS ALLOCATED FOR THESE SYSTEMS		



RECORD
01/16/2018
02:41:56 PM

REVISIONS	DATE

RECORD DRAWING

DRAWN: E.BARILAR
AREA: 11
TYPE: KT13
SHEET: A-11

Bill of Material

quantities per area

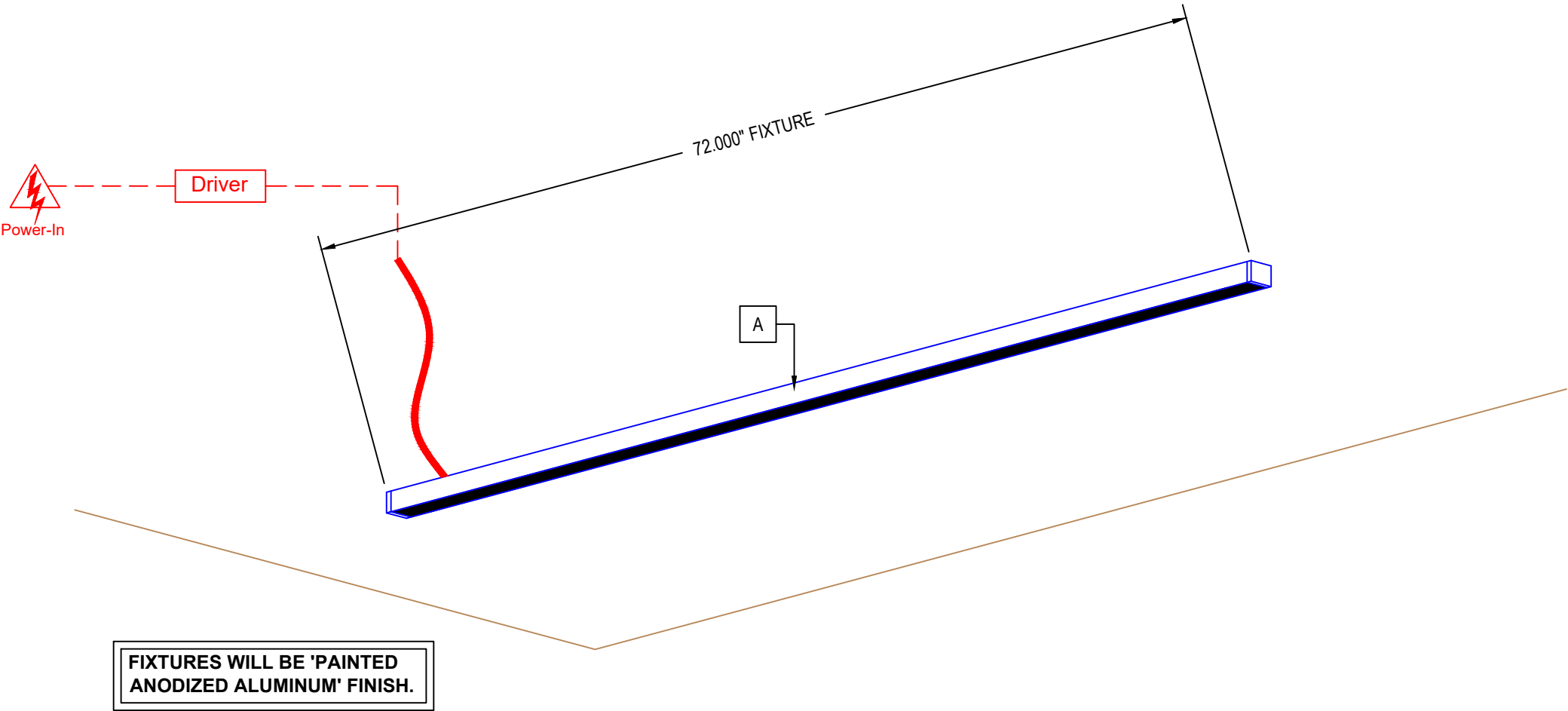
QTY	CATALOG NUMBER	
3	WG-SM20LDL-S-6'0"-L-835-UNV-X-OD-SC-C4-MODAA	
consisting of:		
ID	QTY	PART NUMBER
A	1	SM20LDL-S-71900-L-835-OD-C4

Remote Power Supply

(1)	IL-JB12-LED-24006-UNV-D010	Osram 10%, 0-10V Dimming 96W, 24VDC, 120-277V
-----	----------------------------	--

(3) 6'-0" SYSTEMS (MAX) MAY BE POWERED PER DRIVER

(1) DRIVERS ALLOCATED FOR THESE SYSTEMS



RECORD DRAWING

REVISIONS

DATE

DATE

DRAWN: E.BARILAR

AREA: 12

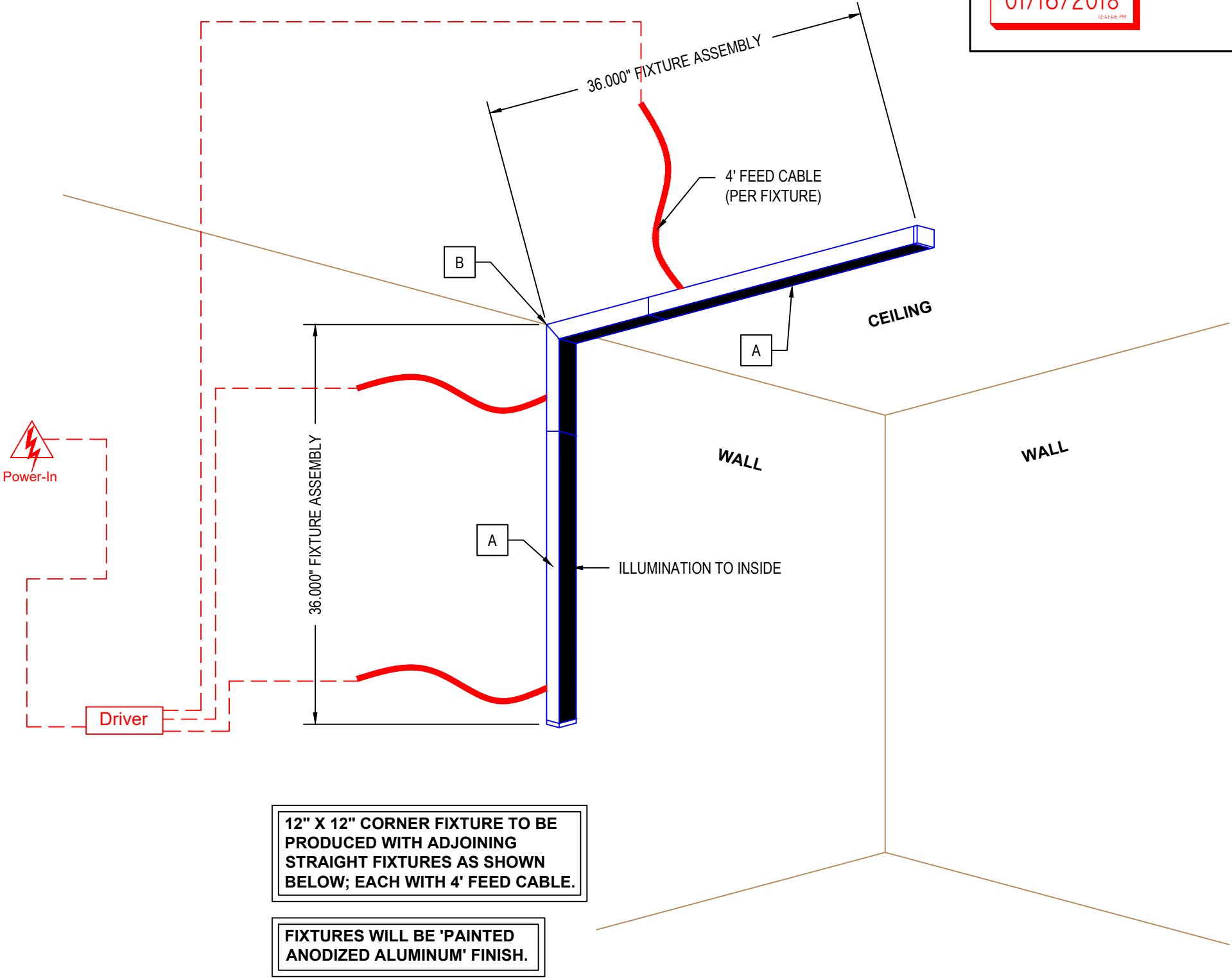
TYPE: KT13

SHEET: A-12

Bill of Material *(quantities per area)*

QTY	CATALOG NUMBER	
2	WG-SM20LDL-PZ-3'0"x3'0"-L-835-UNV-X-OD-SC-C4-MODAA	
consisting of:		
ID	QTY	PART NUMBER
A	2	SM20LDL-S-23950-L-835-OD-C4
B	1	SM20LDL-IC90-12000-L-835-OD-C4

Remote Power Supply		
(1)	IL-JB12-LED-24006-UNV-D010	Osram 10%, 0-10V Dimming 96W, 24VDC, 120-277V
(2) 3'-0"x 3'-0" SYSTEMS (MAX) MAY BE POWERED PER DRIVER		
(1) DRIVERS ALLOCATED FOR THESE SYSTEMS		



RECORD
01/16/2018
12:41:58 PM

REVISIONS	DATE	REVISIONS	DATE			

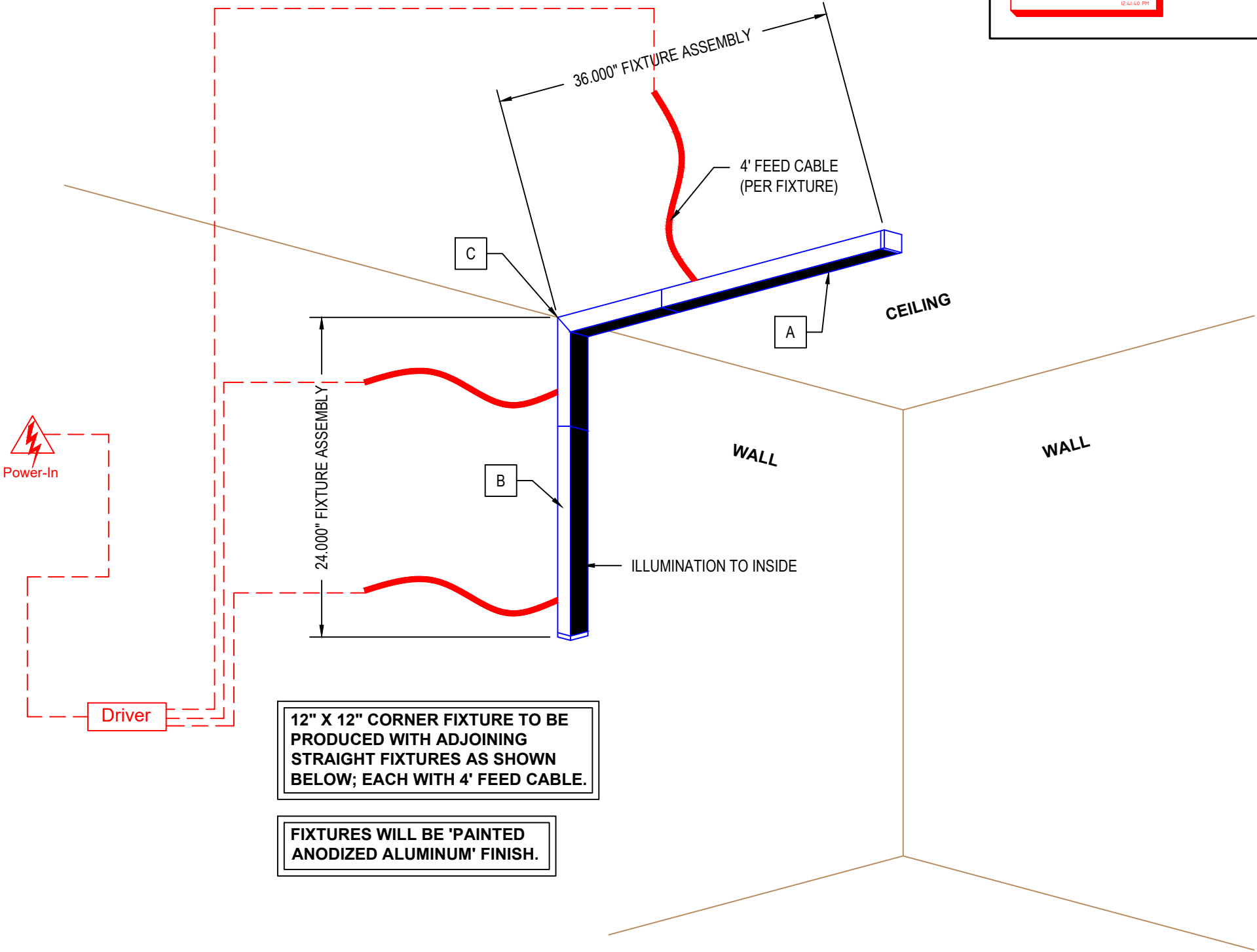
RECORD DRAWING

DRAWN: E.BARILAR
AREA: 13
TYPE: KT13
SHEET: A-13

Bill of Material *(quantities per area)*

QTY	CATALOG NUMBER	
13	WG-SM20LDL-PZ-2'0"x3'0"-L-835-UNV-X-OD-SC-C4-MODAA	
consisting of:		
ID	QTY	PART NUMBER
A	2	SM20LDL-S-23950-L-835-OD-C4
B	1	SM20LDL-S-11950-L-835-OD-C4
C	1	SM20LDL-IC90-12000-L-835-OD-C4

Remote Power Supply		
(2)	IL-JB12-LED-24006-UNV-D010	Osram 10%, 0-10V Dimming 96W, 24VDC, 120-277V
(5) 2'-0"x 3'-0" SYSTEMS (MAX) MAY BE POWERED PER DRIVER		
(3) DRIVERS ALLOCATED FOR THESE SYSTEMS		



RECORD
01/16/2018

REVISIONS	DATE	REVISIONS	DATE			

RECORD DRAWING

DRAWN: E.BARILAR
AREA: 14
TYPE: KT13
SHEET: A-14

20LDL Fixture

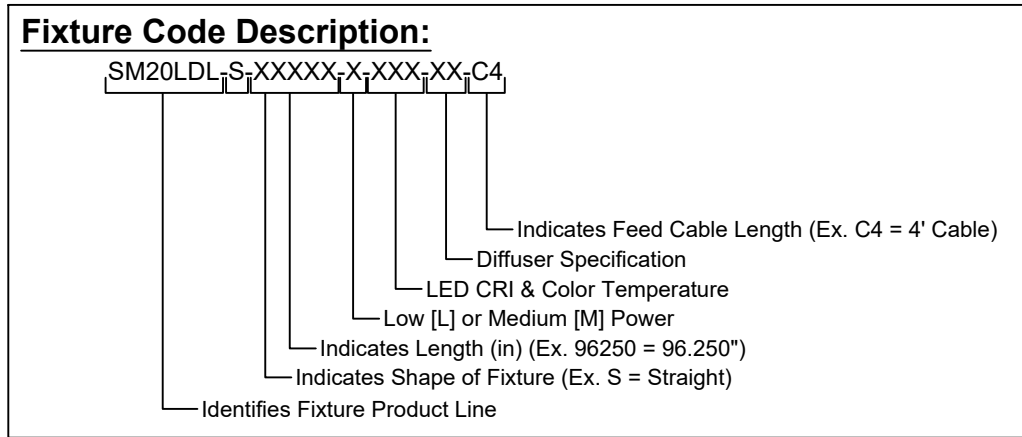
Fixture Configuration Information

The diagram illustrates a Gear Tray lighting system. A junction box, labeled "Remote Driver in Junction Box" with a note "Qty and Location as required and indicated by record drawings", receives "Mains Voltage In by others". It is connected via "Wiring from Junction Box to connection to fixture assemblies by others" to a "20 Linear Fixture" and an "SM20 Fixture". A "4' Feed Cable (standard) per fixture" is shown connecting the junction box to the linear fixture. The SM20 fixture is also connected to the system. A dashed line indicates the continuation of the fixture assembly.

Fixture Code Description:						
SM20LDL	S	XXXXXX	X	XXX	XX	C4
Identifies Fixture Product Line	Indicates Shape of Fixture (Ex. S = Straight)	Indicates Length (in) (Ex. 96250 = 96.250")	Low [L] or Medium [M] Power	LED CRI & Color Temperature	Diffuser Specification	Indicates Feed Cable Length (Ex. C4 = 4' Cable)

****Example Gear Tray scenario shown above. Please refer to Record Drawings for actual Driver Feeds and Quantities.**

DRAWN: E.BARILAR
AREA: N/A
TYPE: N/A
SHEET:
D-1



**Example Gear Tray scenario shown above. Please refer to Record Drawings for actual Driver Feeds and Quantities.